

# HSR Riddle to Sutherlin



## Moving People With Innovative **TRANSPORT SOLUTIONS**

Designing Corridors for High-Speed Rails

[Find Out More](#)

The High-Speed Rail Corridor between Riddle and Sutherlin

# HSR Roseburg Section One

- Miles from Riddle to Sutherlin on ground 3.17 miles, on flyovers 13.60 miles, in tunnels 12.74 miles. Total 29.51 HSR miles
- This section is mostly in tunnels. The topography does not allow any different version. The rail grades are less than 1%, and the curve radiuses are above 30,000 ft, except at Riddle.
- Much consideration has been given to avoiding built-up and productive farmland to build this HSR corridor.

HSR Roseburg\_section one Des by RN

# Legend



CHSR Station in Tunnel




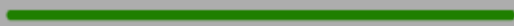
CHSR Station on Flyovers



CHSR Station in on Ground

 On ground

 Cuts

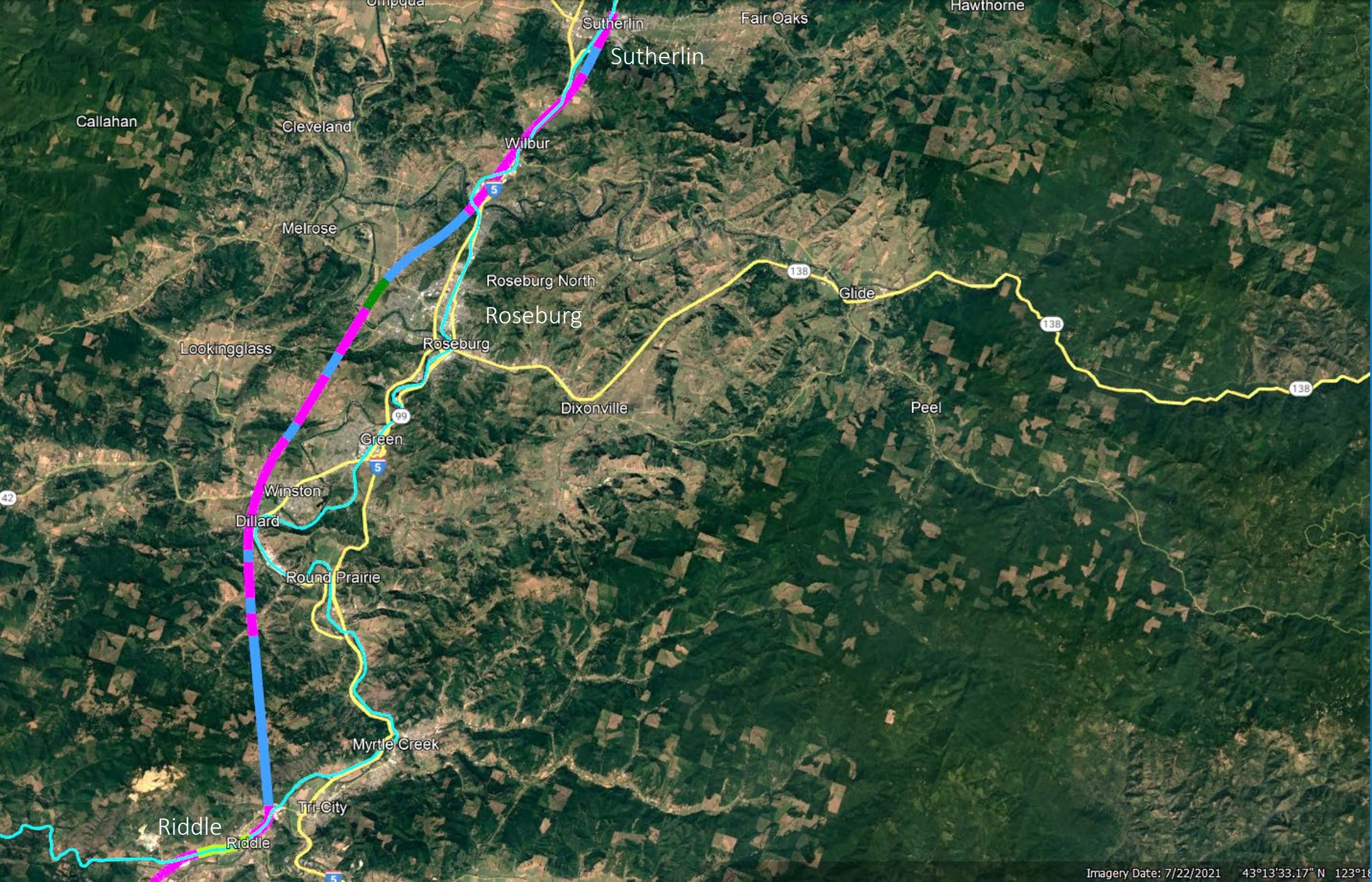
 Fills

 Flyovers

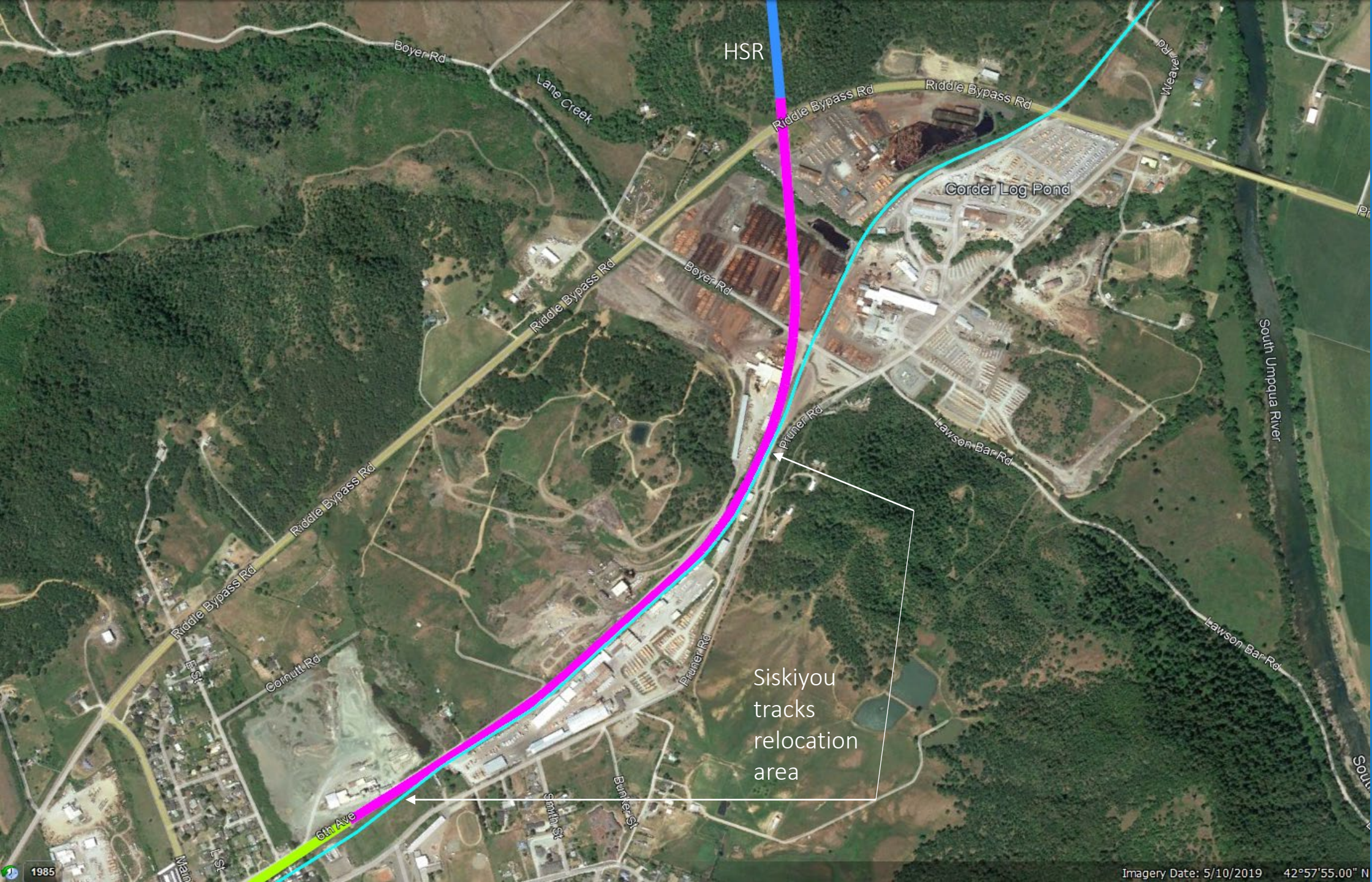
 Tunnels

 Existing Freight Railroads, other than BNSF and UP RR

 Existing Freight Railroads, and Amtrak



Overview of HSR between Riddle and Sutherlin



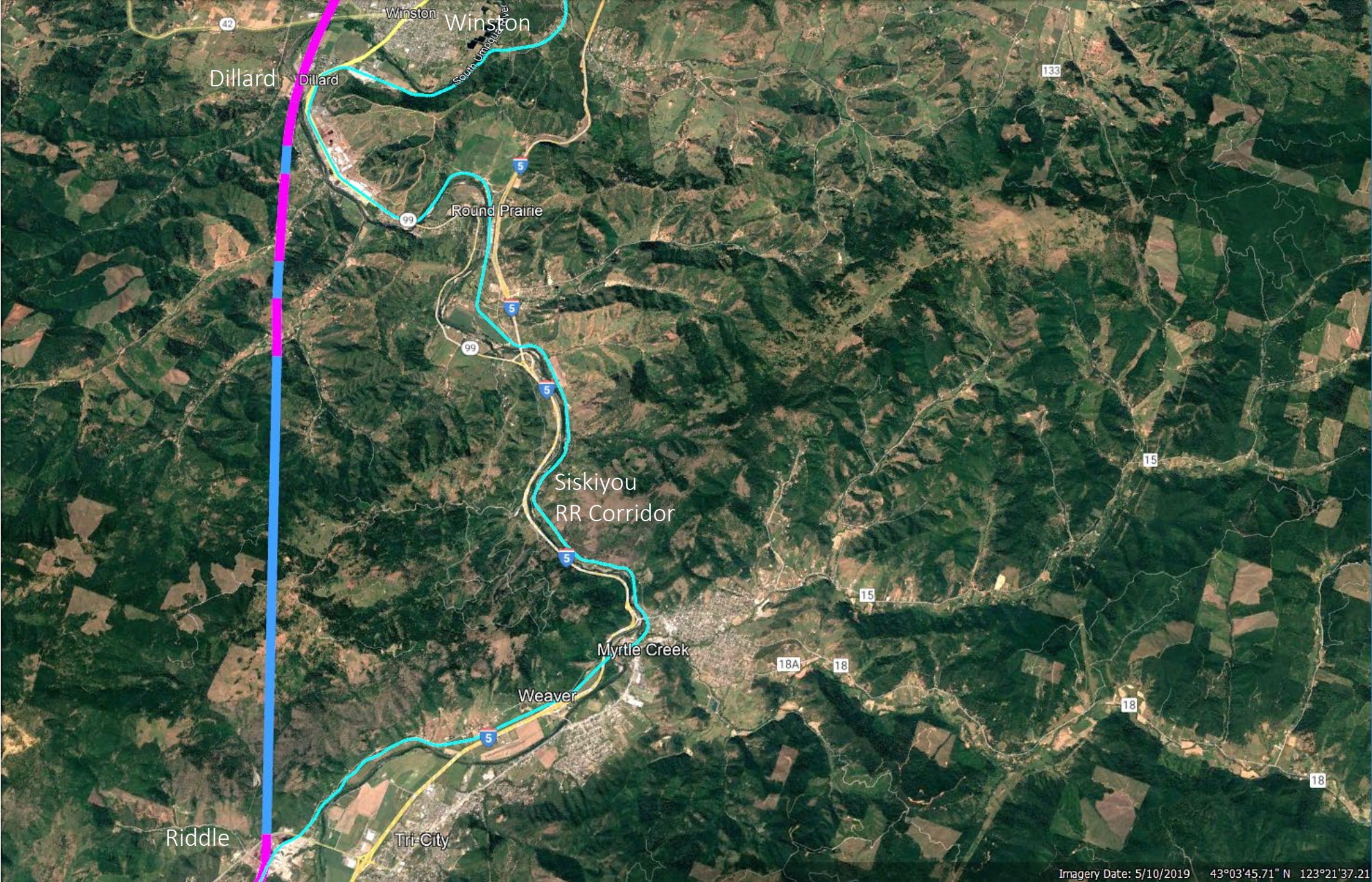
HSR

## HSR at Riddle

The HSR will go on to a flyover and enter the tunnel.

The Siskiyou tracks must be relocated to the SE to allow room for the flyover columns. There is room to do this.

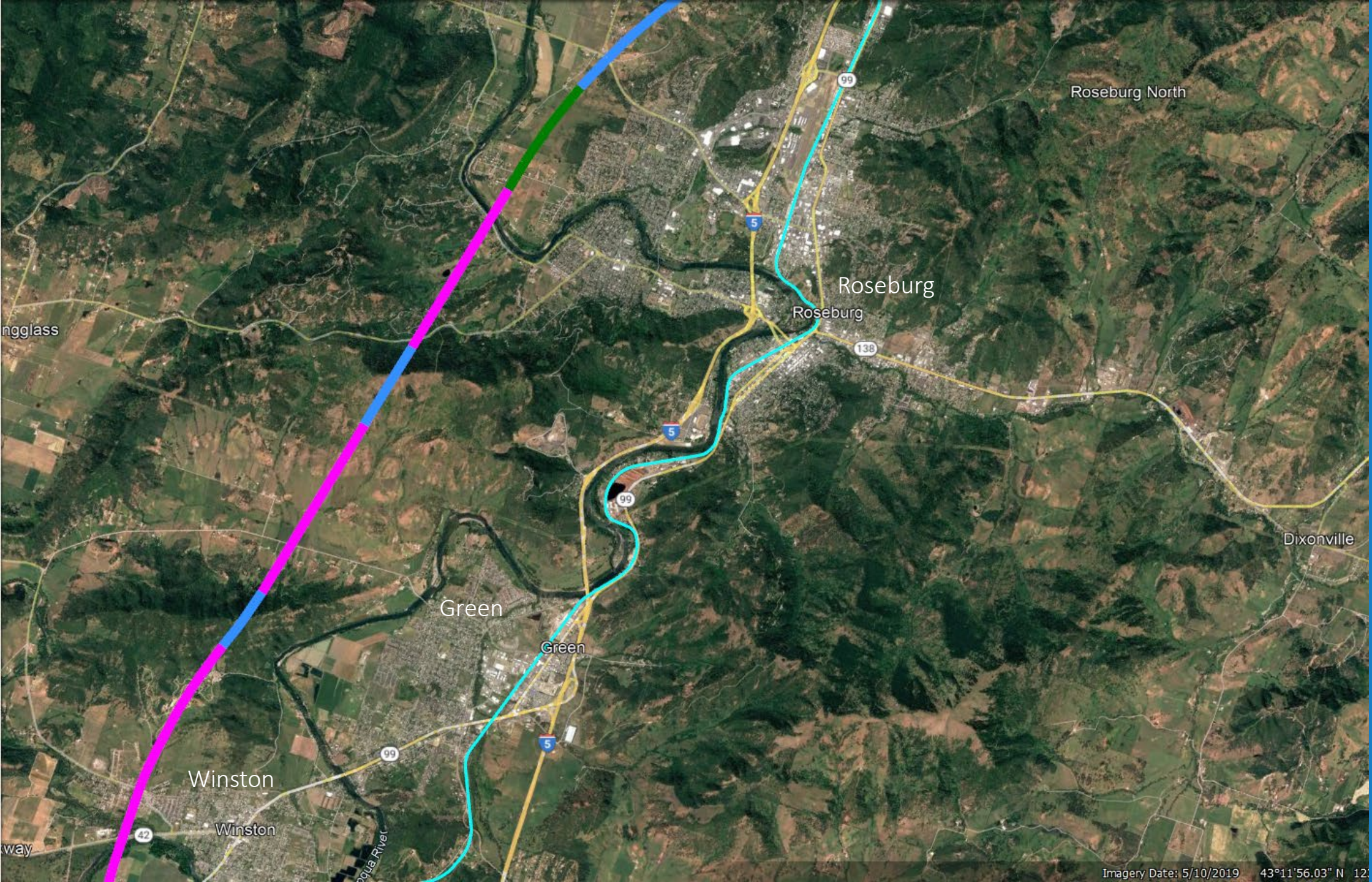
Siskiyou tracks relocation area



## HSR between Riddle and Winston

With its many curves, the Siskiyou rail corridor can not be used for HSR.

Some of the Dillard flyovers may be in in-fill.



### HSR between Winston and West of Roseburg

The HSR can not use a route more to the east because of the many built-up areas and topographic conditions.

Some of the Green flyovers may be in in-fill.



NW Garden Valley Rd

Roseburg HSR Station

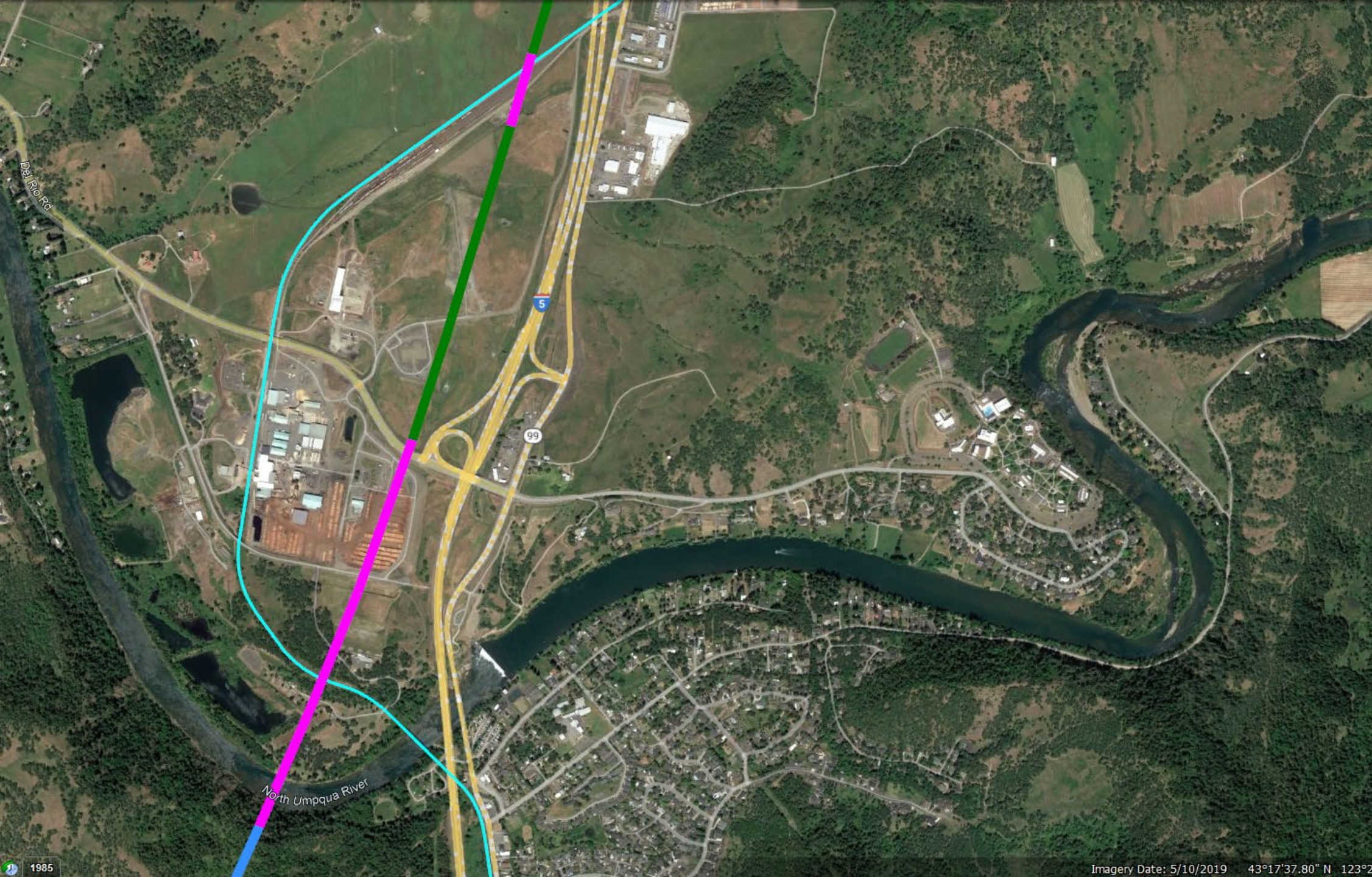
Park and Ride

HSR at West of Roseburg Station

This station is on in-fill from tunnel excavations.

There is a pedestrian underpass to access the west side platform.

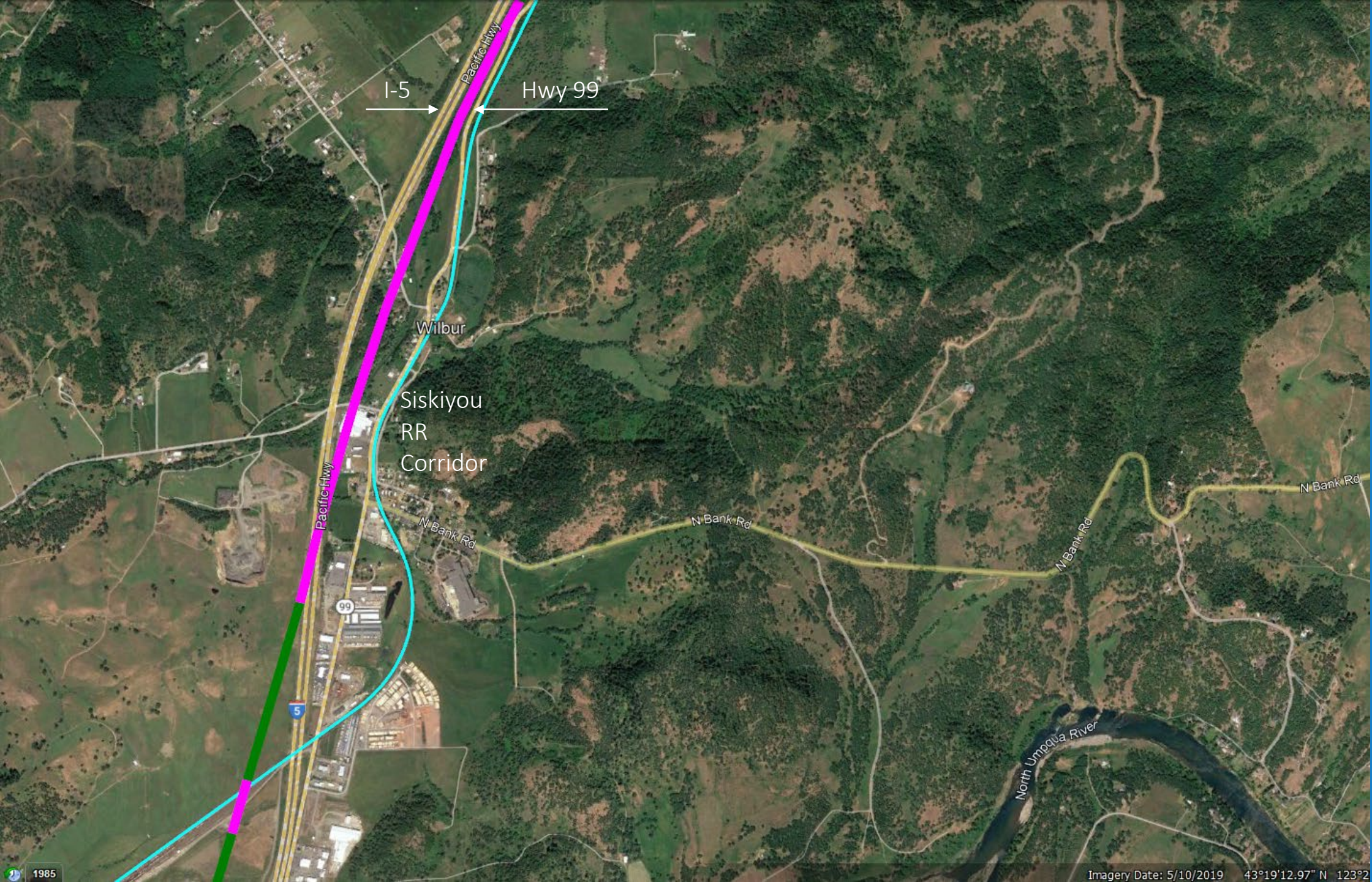




## HSR at WINCHESTER

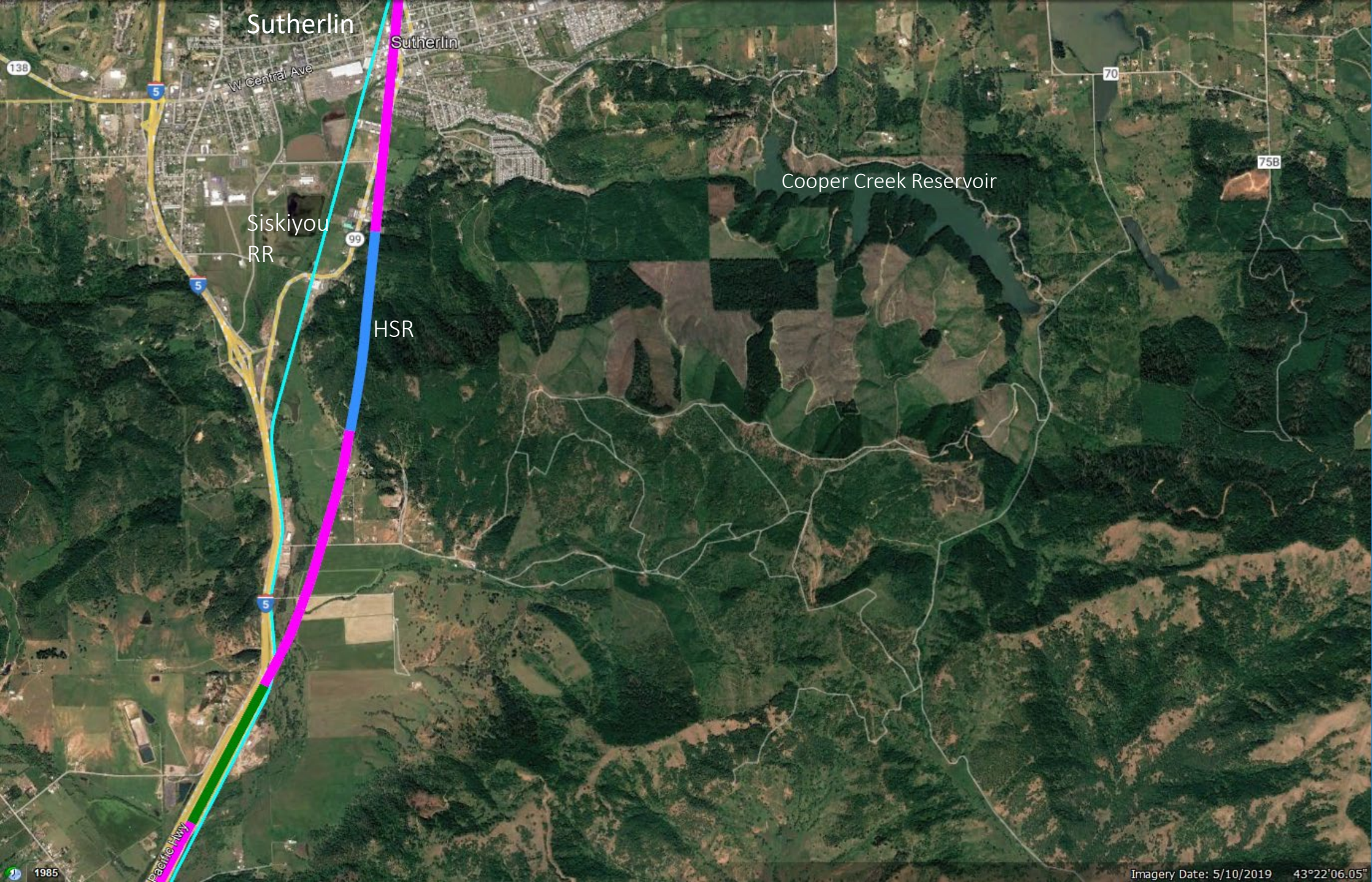
Here, the HSR goes from the tunnel to the flyover, then to the in-fill, again to the flyover crossing the Siskiyou RR Yard, and then again to the in-fill.

In-fills are from tunnel excavation. Build the flyover above the lumber mill first to allow material movements.



## HSR at Wilbur

The HSR will flyover the Siskiyou Rail Corridor and the I-5 and then go between the I-5 and Hwy 99



Sutherlin

Sutherlin

W Central Ave

Siskiyou  
RR

Cooper Creek Reservoir

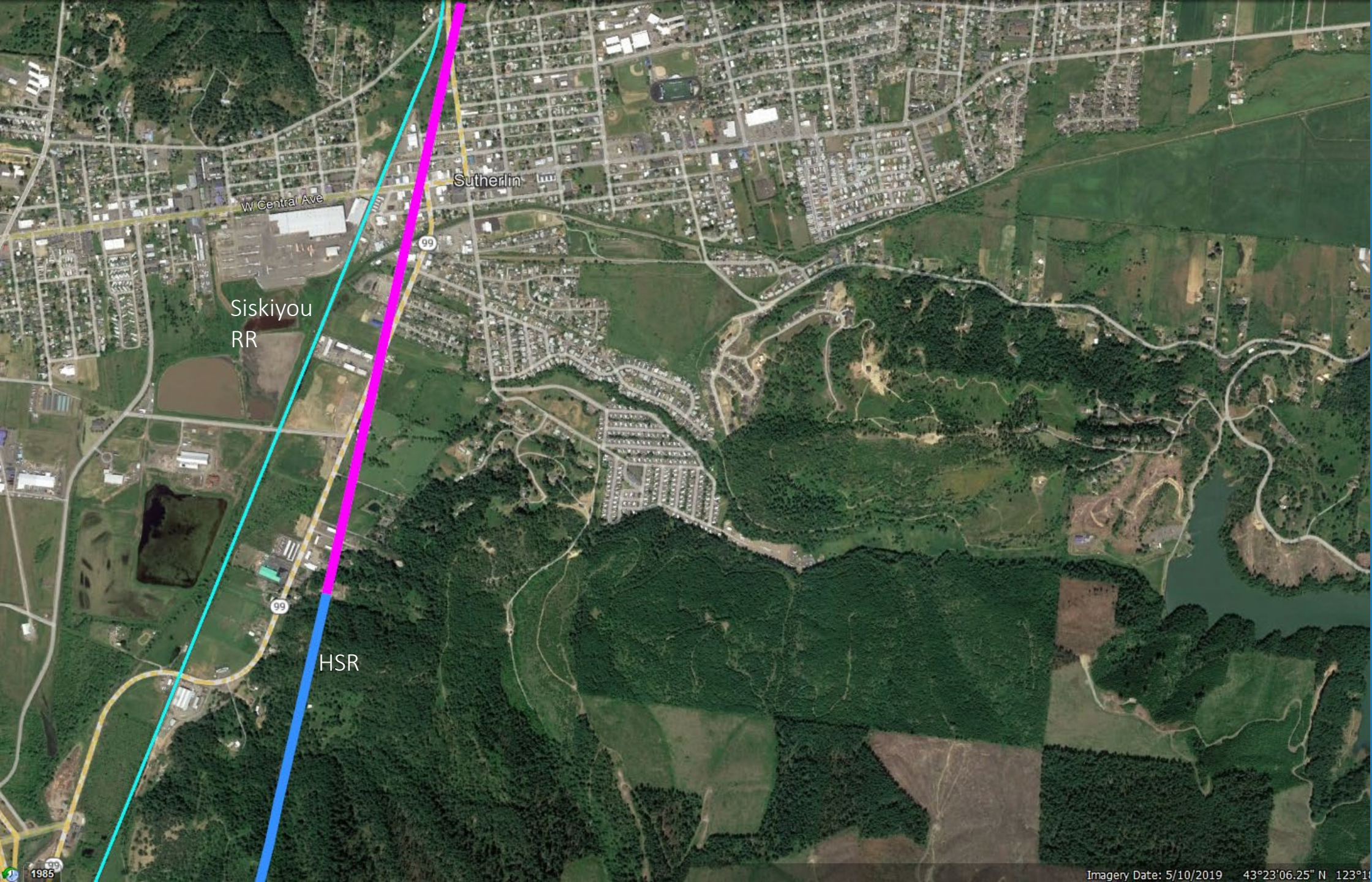
HSR

## HSR at Sutherlin

The HSR must fly over Sutherlin Town to avoid all grade crossings.

The HSR can not follow the I-5 corridor to tight curves.

The HSR grades are less than 1% between Riddle and Sutherlin.



## HSR at Sutherlin

The HSR must fly over Sutherlin Town to avoid all grade crossings.

The HSR grades are less than 1% in this section.

