

HSR Grants Pass, OR, to Riddle



Moving People With Innovative
TRANSPORT SOLUTIONS

Designing Corridors for High-Speed Rails

[Find Out More](#)

The
High-Speed
Rail Corridor
between
Grants Pass
and Riddle

HSR Grants Pass

- Miles from Grants Pass to Riddle on ground 2.09 miles, on flyovers 7.53 miles, in tunnels 31.00 miles. Total 40.62 HSR miles
- This section is mostly in tunnels. The topography does not allow any different version. The rail grades are 1.2% or less, and the curve radiuses are above 30,000 ft, except at Riddle.
- Much consideration has been given to avoiding built-up and productive farmland to build this HSR corridor.

- HSR Grants Pass Des by RN

Legend



CHSR Station in Tunnel




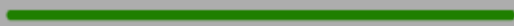
CHSR Station on Flyovers



CHSR Station in on Ground

 On ground

 Cuts

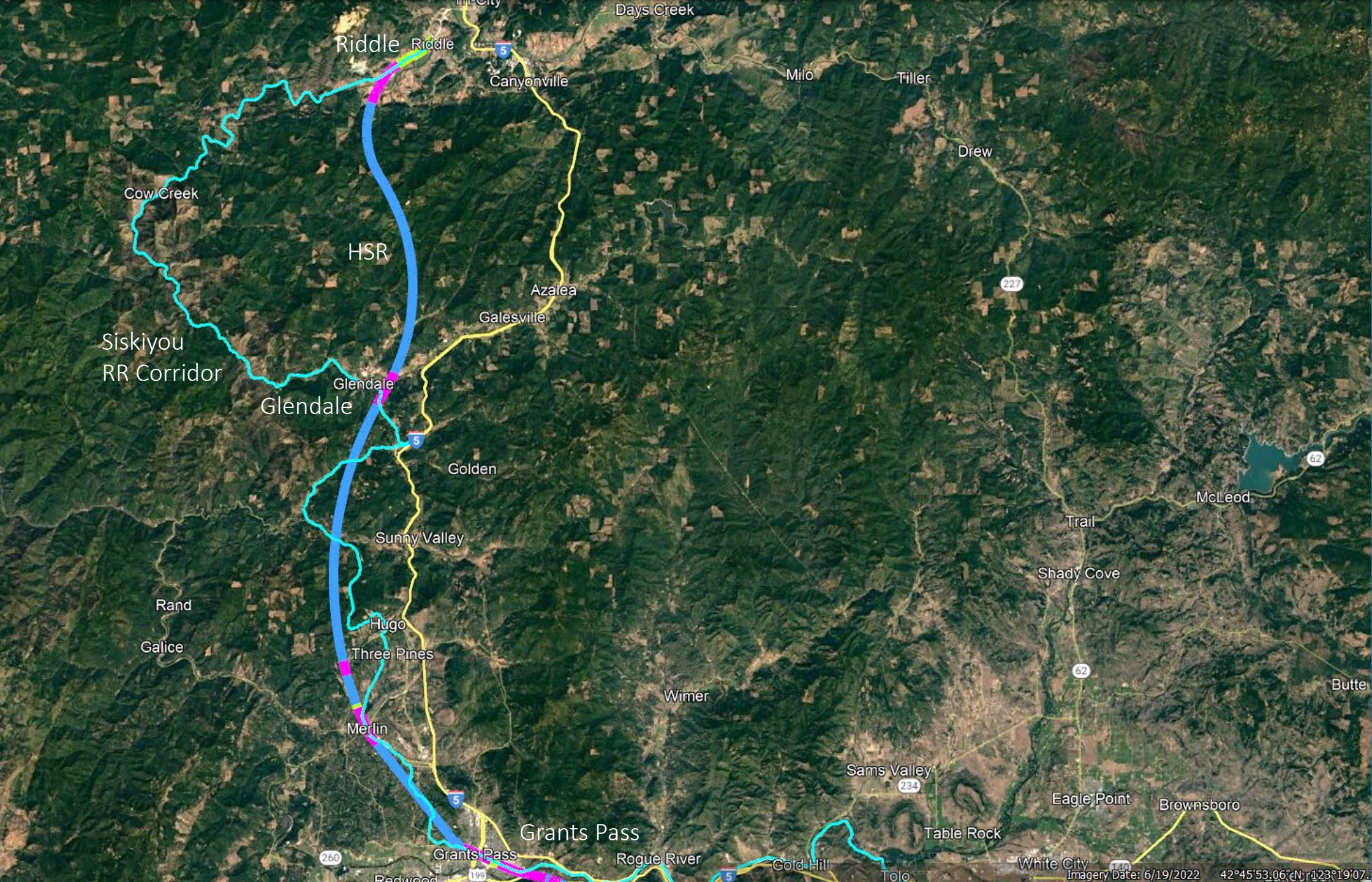
 Fills

 Flyovers

 Tunnels

 Existing Freight Railroads, other than BNSF and UP RR

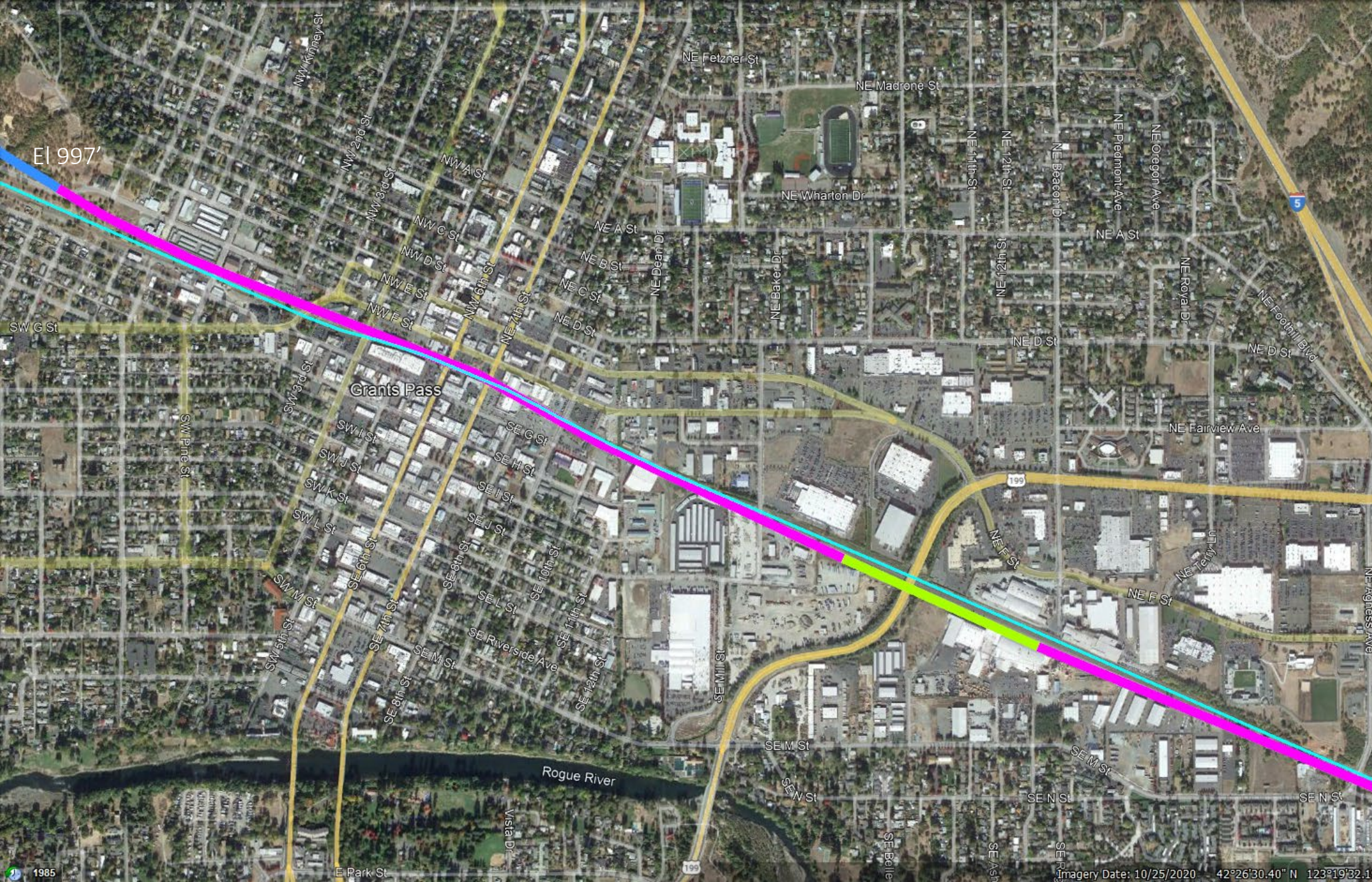
 Existing Freight Railroads, and Amtrak



Map Overview of the Grants Pass to Riddle Corridor

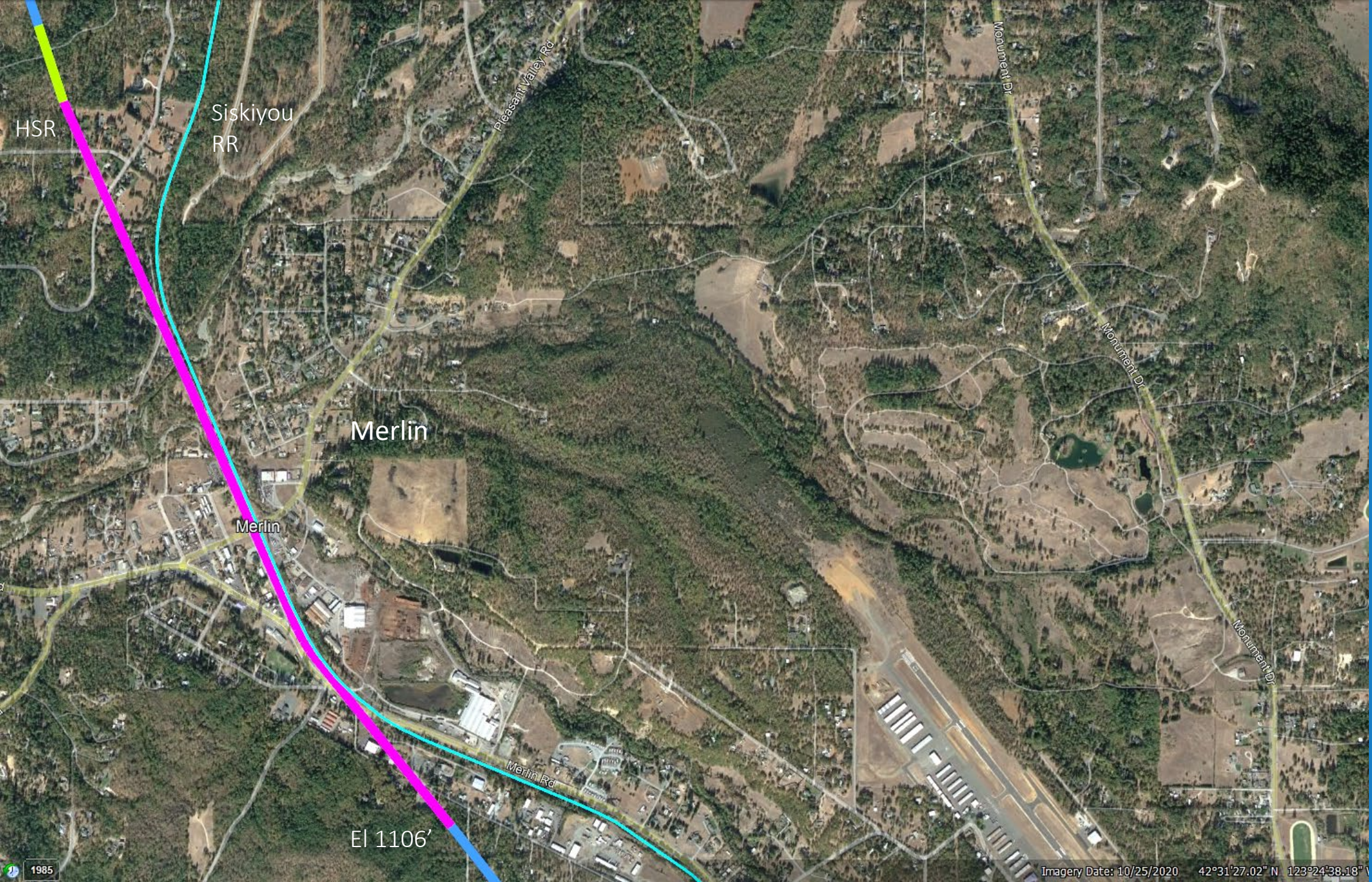
The HSR has very large curve radii. The old Siskiyou rail corridor is very curvy, steep, and long.

Glendale may get an HSR station.



HSR at Grants Pass

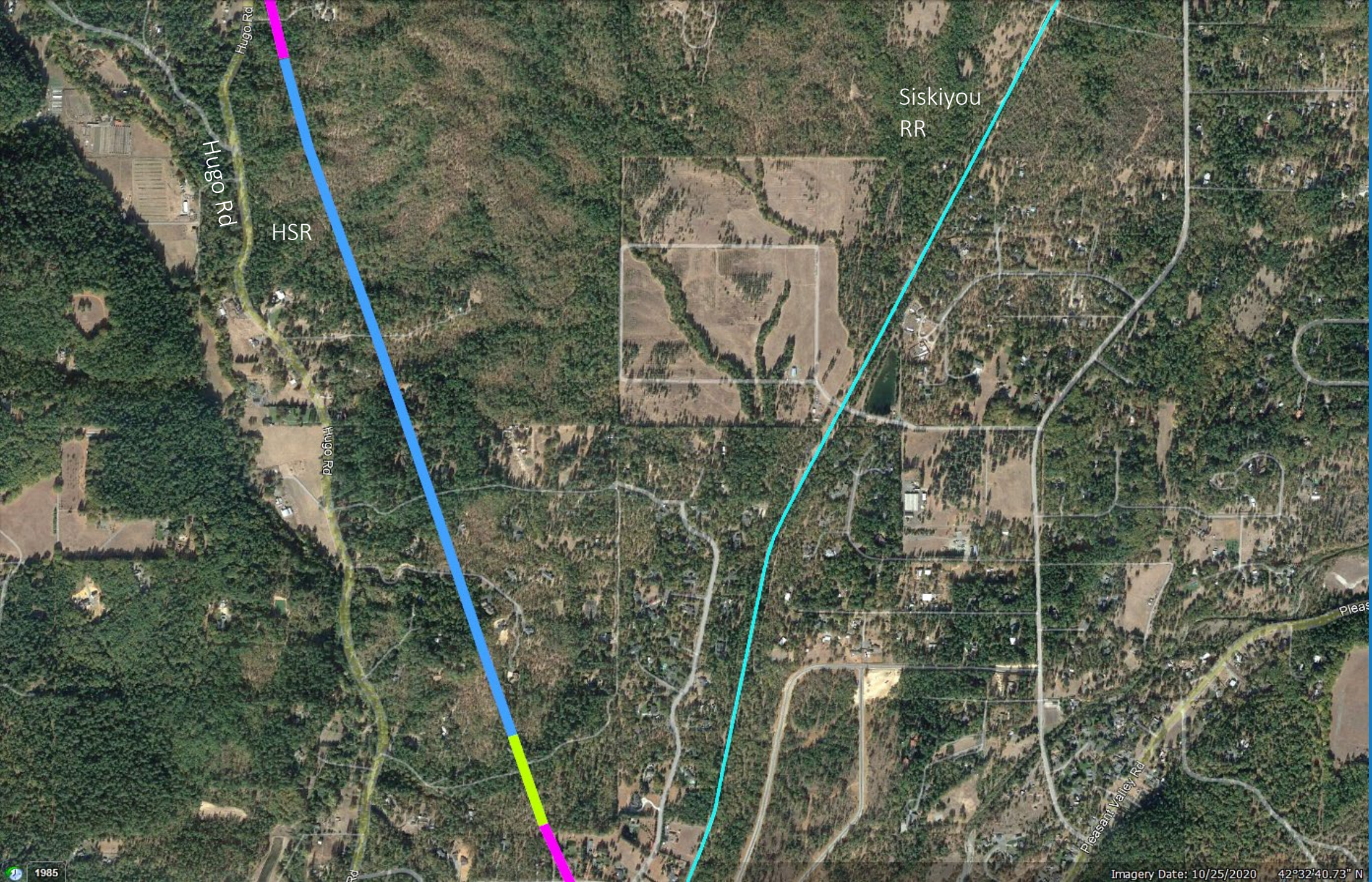
The Grants Pass HSR station is on the ground below US Hwy 166. The approaches are on flyovers because the existing Siskiyou RR corridor is too narrow to accommodate the HSR tracks.



HSR at Merlin

The HSR will be above the possible Merlin station. The HSR overpass will eliminate all grade crossings.

The I-5 is 3.5 miles away from Merlin.



Siskiyou
RR

Hugo Rd

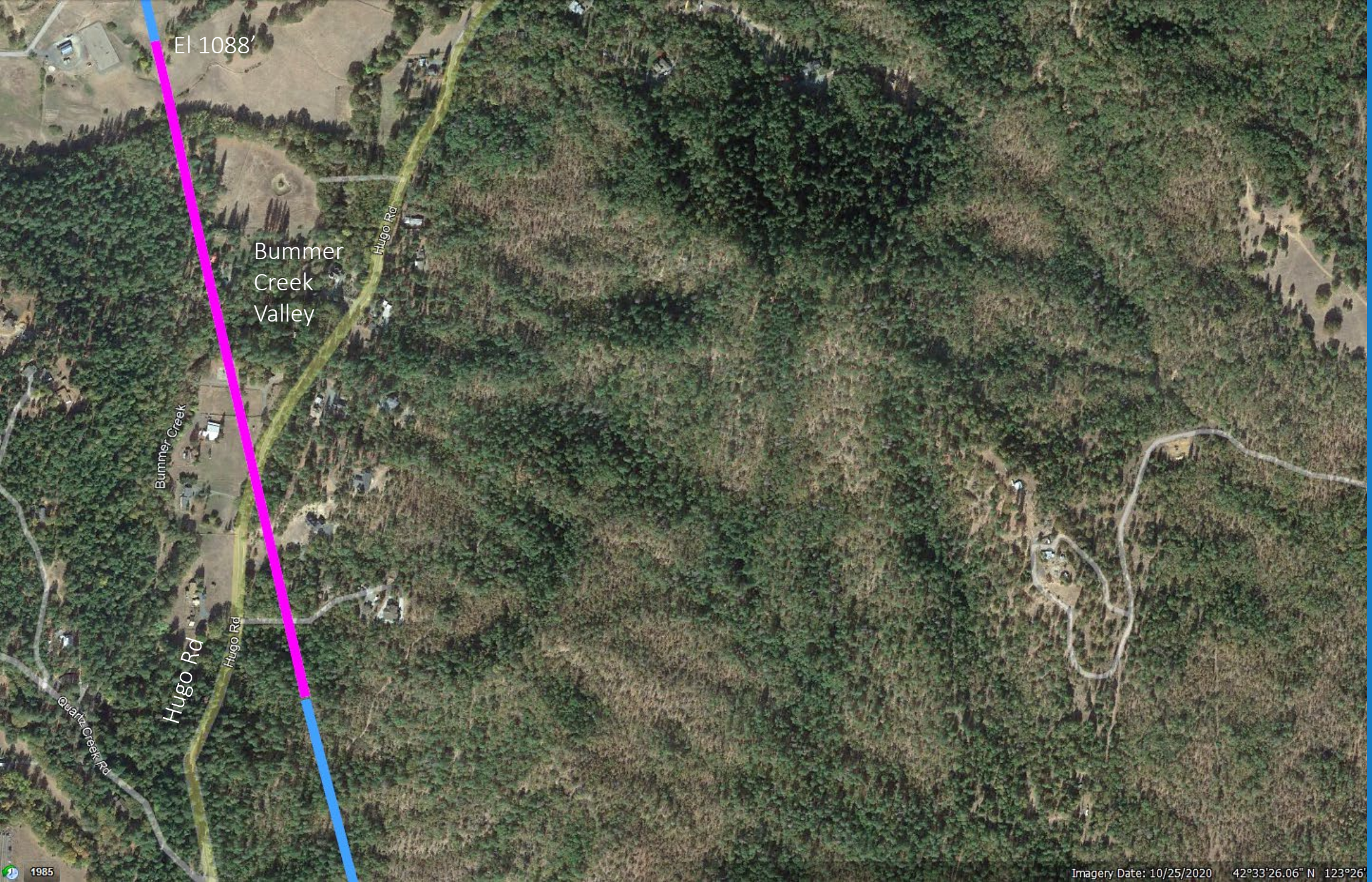
HSR

Hugo Rd

Pleasant Valley Rd

Pleasant

HSR
Northwest of
Merlin



El 1088'

Bummer
Creek
Valley

Bummer
Creek

Hugo Rd

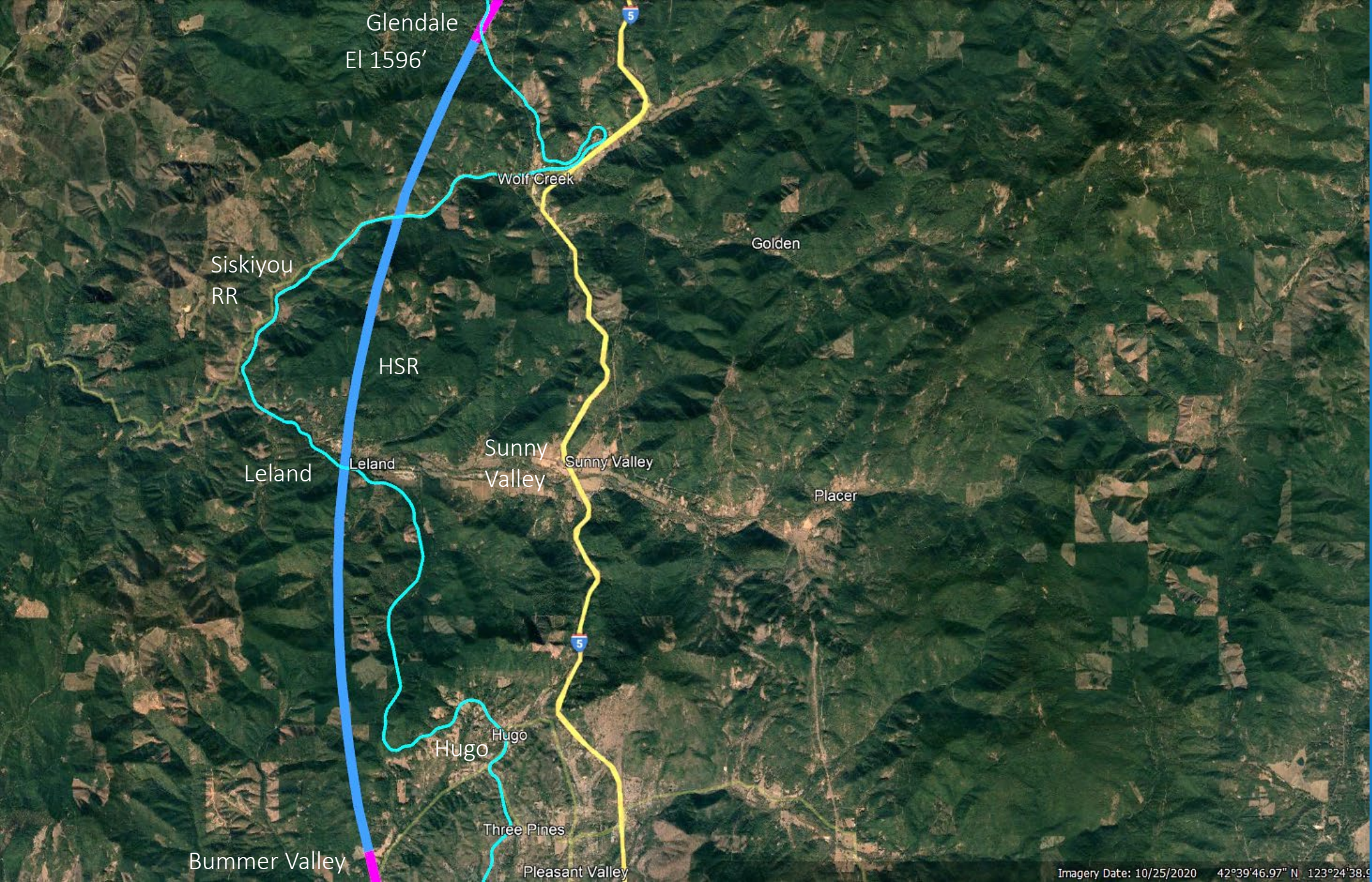
Hugo Rd

Hugo Rd

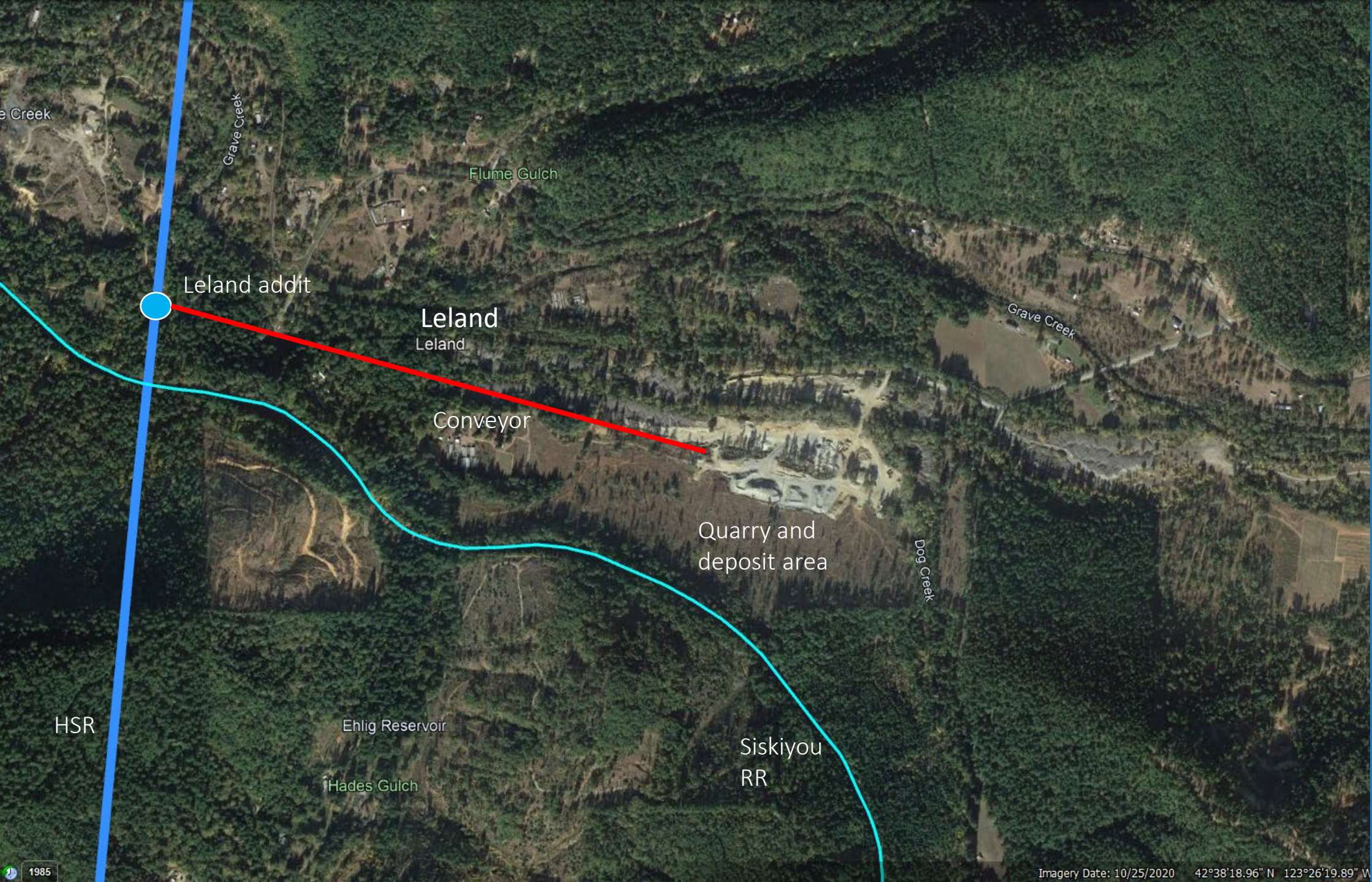
Quartz
Creek Rd

HSR at Hugo
Rd Crossing

The HSR
crosses over
the Bummer
Creek Valley



HSR between
Bummer
Valley and
Glendale



HSR at Leland

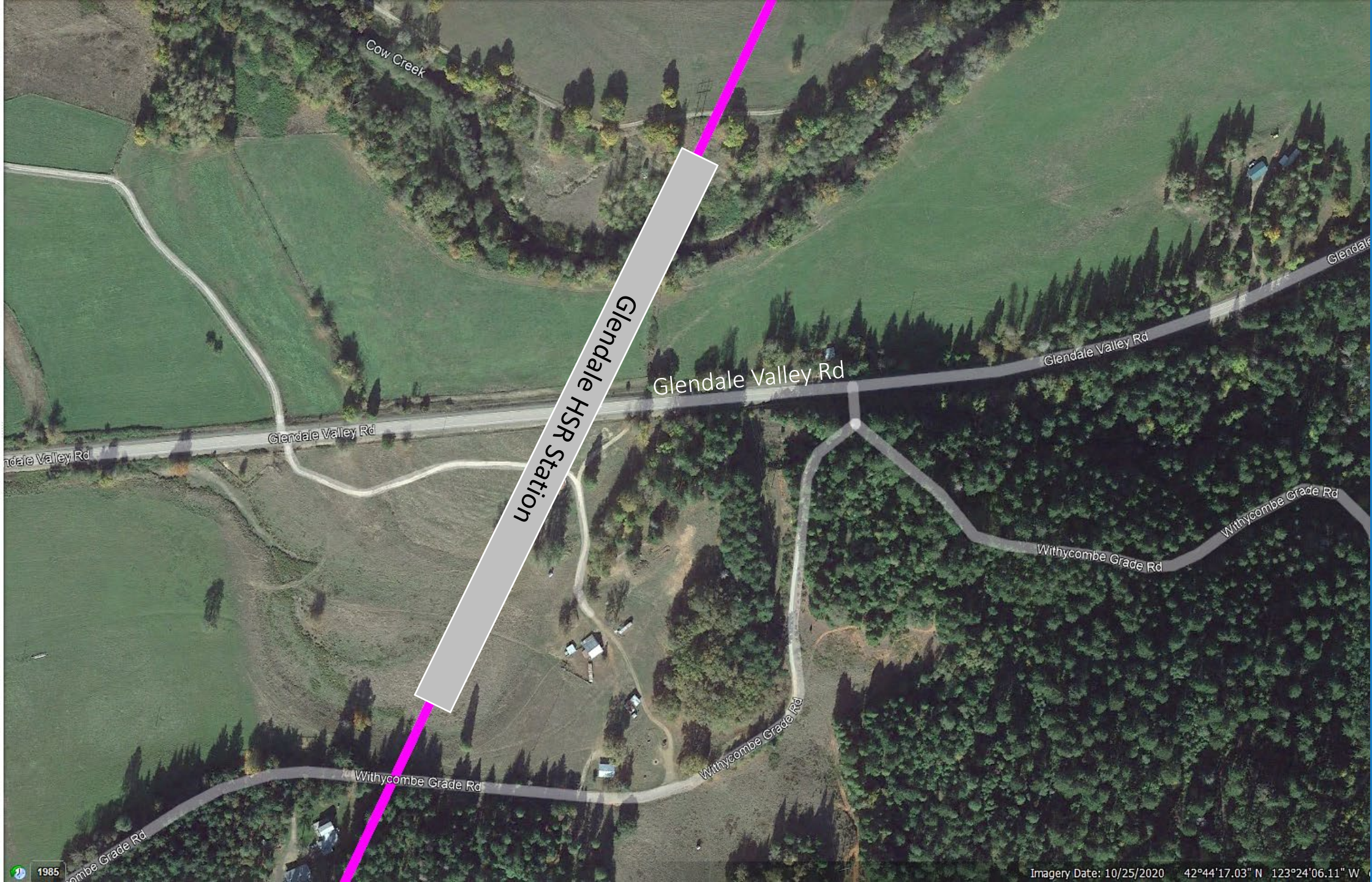
The Leland will have an addit. Move tunnel excavation material via conveyor to the existing rock quarry for processing and deposit.

The belt conveyor length is ± 0.8 miles.

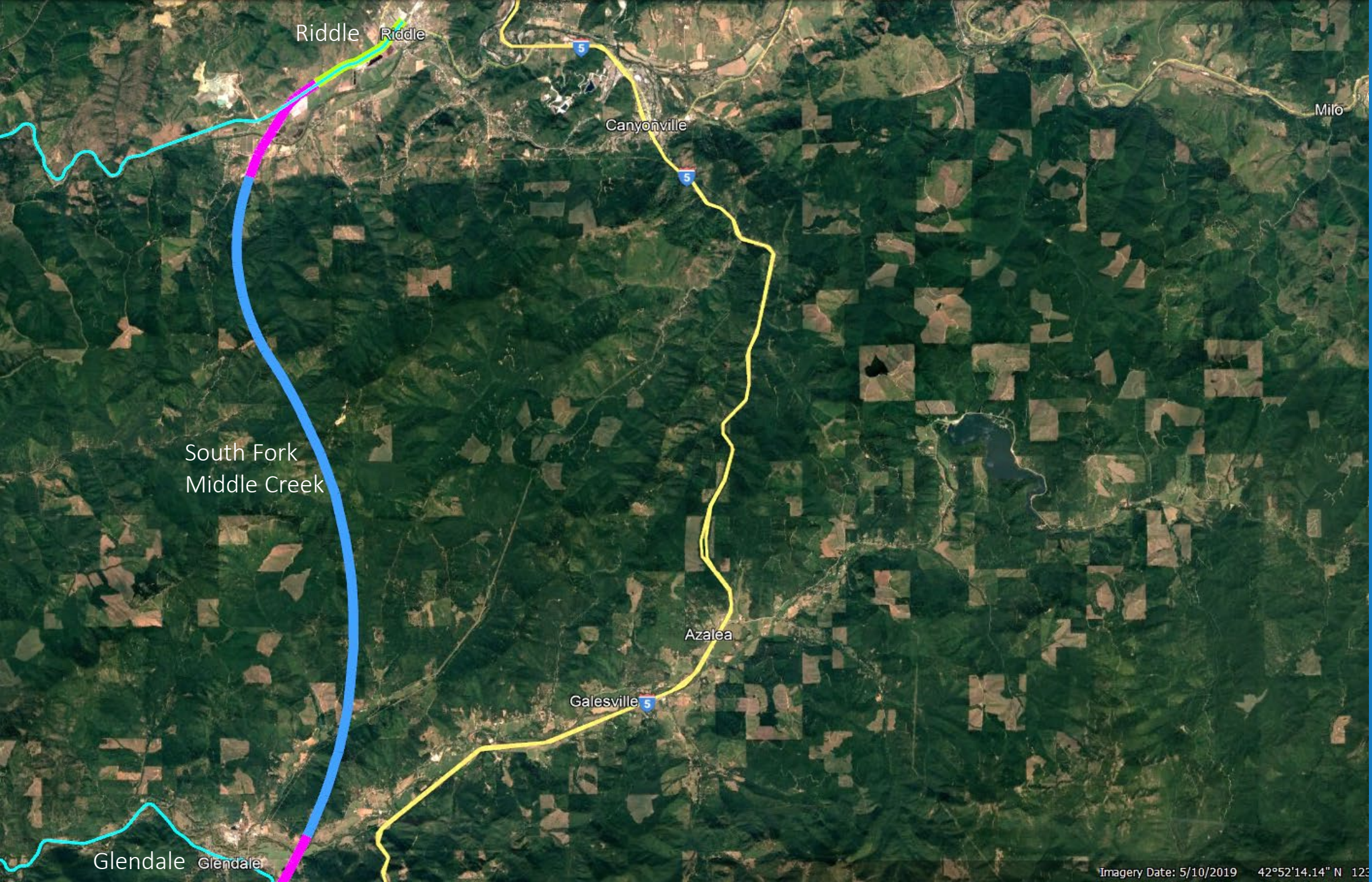


HSR at Glendale

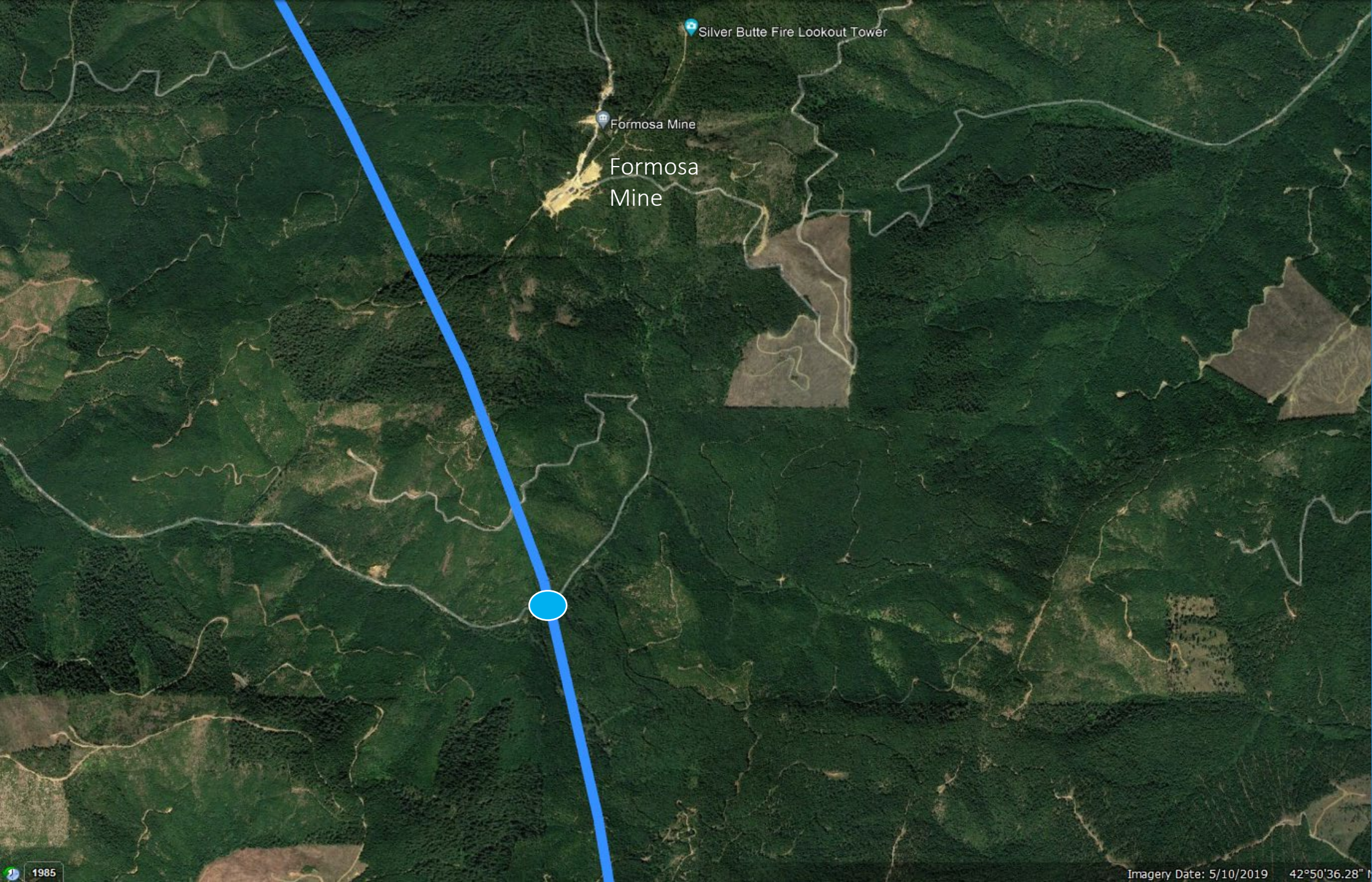
The HSR will fly over the Siskiyou RR tracks. Only a few buildings will be affected.



HSR at
Glendale
with Possible
HSR Station
above the
Glendale
Valley Rd

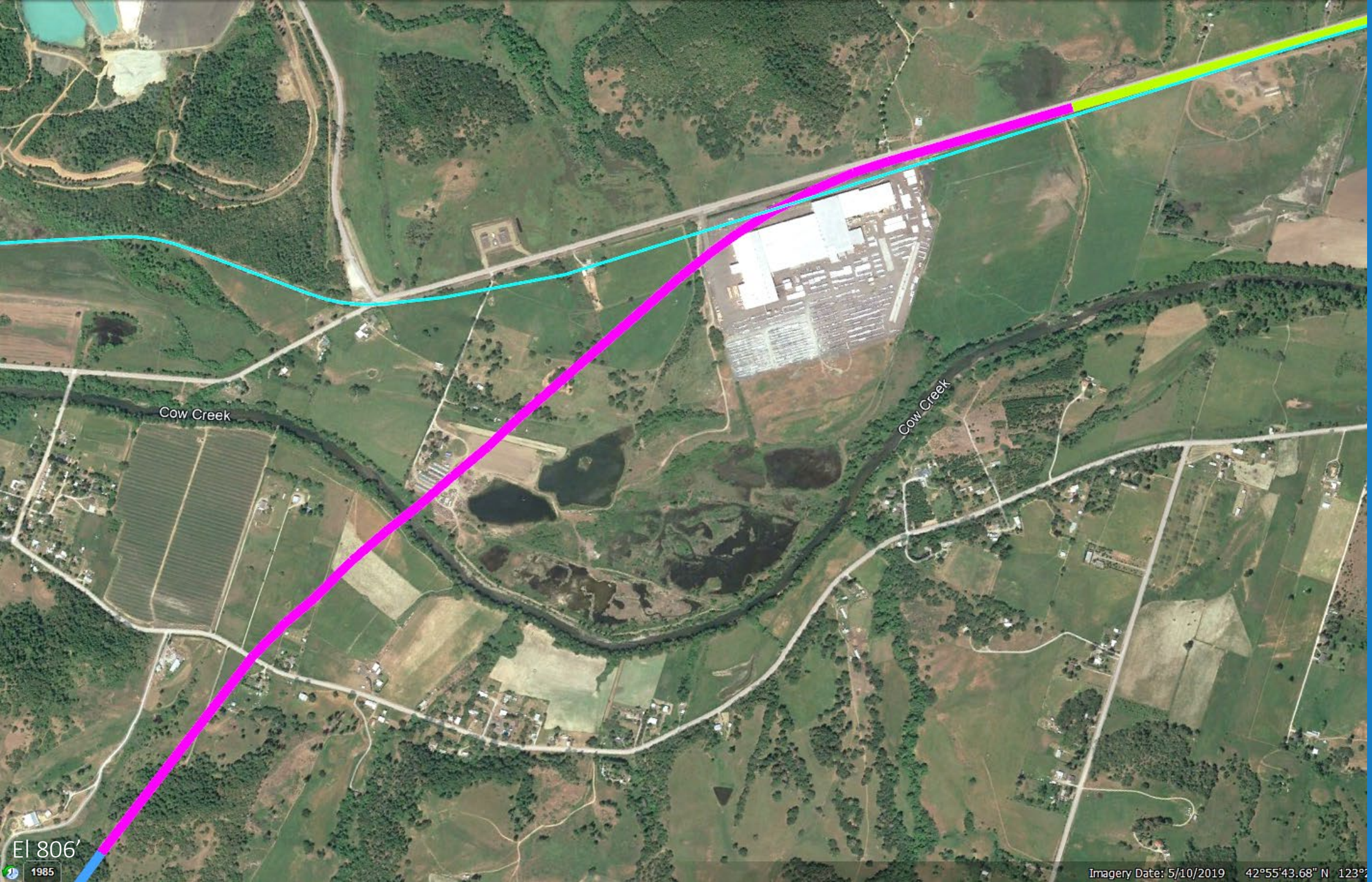


HSR between
Glendale and
Riddle



HSR Addit at South Fork Middle Creek

This addit is midway between Glendale and Riddle. Tunnel excavation material processing and deposit is next to the addit.



HSR Entering Riddle

The HSR will fly over the Cow Creek and the existing Siskiyou RR tracks.

The flyover does evade buildings.



HSR at Riddle

The HSR is to the north of the existing Siskiyou RR corridor. The existing corridor needs some widening.

Move Riddle Bypass Rd to the northwest as needed.



Riddle HSR Sta

Siskiyou
RR Tracks

Main St

Riddle

Riddle HSR Station

Riddle HSR Station

All trains stop here for an inspection. The Siskiyou tracks need to be moved to the southeast.

Main St has a grade crossing next to the train stops.

Access to the platform via an overpass for safety and groundwater evasion at an underpass.

Some existing buildings will be lost.