

HSR Sacramento, CA, to Lathrop



Moving People With Innovative
TRANSPORT SOLUTIONS

Designing Corridors for High-Speed Rails

[Find Out More](#)

The
High-Speed
Rail Corridor
between
Sacramento,
CA, and
Lathrop

Electrified HSR Corridor, Sacramento, CA, to Lathrop Presentation On Google Map

- This overviews the proposed High-Speed Rail corridor between Sacramento and Lathrop.
- The station locations are Sacramento, Laguna West, Stockton, and Lathrop.
- This corridor serves inter-city express trains and commuters.
- HSR may purchase the former Western Pacific RR corridor from UPRR. UPRR can use this money to upgrade the existing line to the east.
- The Cascadia High-Speed Rail Company (CHSR) has the plan details for all the corridors and the section profile drawings, including the KMZ.

HSR miles from Sacramento, CA, to Lathrop

- From Sacramento to Lathrop, on flyovers 28.33 miles.
- Miles From Sacramento to Lathrop, on ground 25.82 miles.
- Total HSR miles between Sacramento and Lathrop, 54.15 miles, travel time 18 minutes with 3 stops.
- HSR Travel time from San Francisco to Sacramento is 1 hour and 18 minutes, Amtrak 2 hours and 35 minutes to Emeryville, and an additional 35 minutes via bus to San Francisco.

Legend



CHSR Station in Tunnel




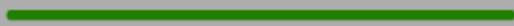
CHSR Station on Flyovers



CHSR Station in on Ground

 On ground

 Cuts

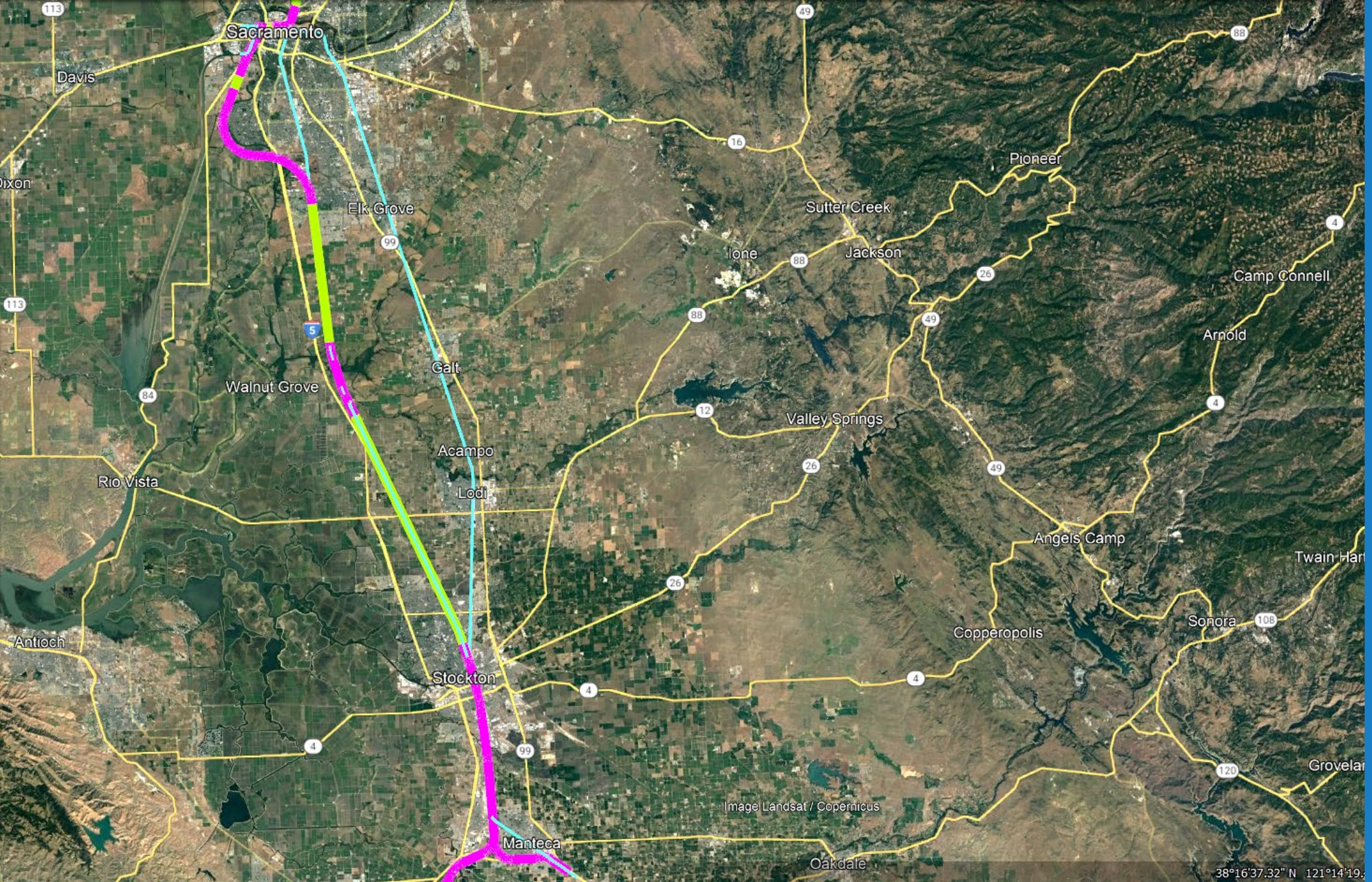
 Fills

 Flyovers

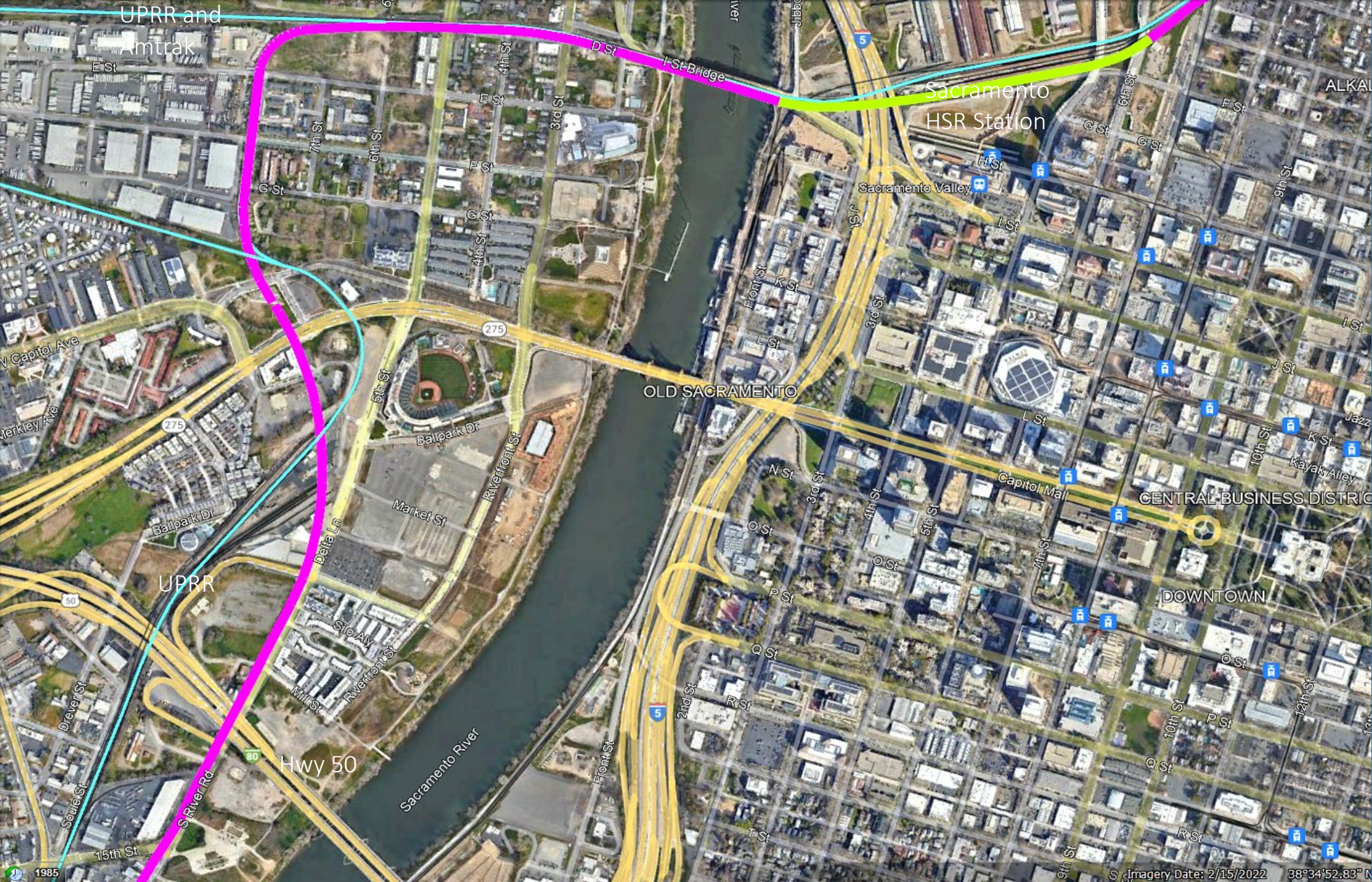
 Tunnels

 Existing Freight Railroads, other than BNSF and UP RR

 Existing Freight Railroads, and Amtrak

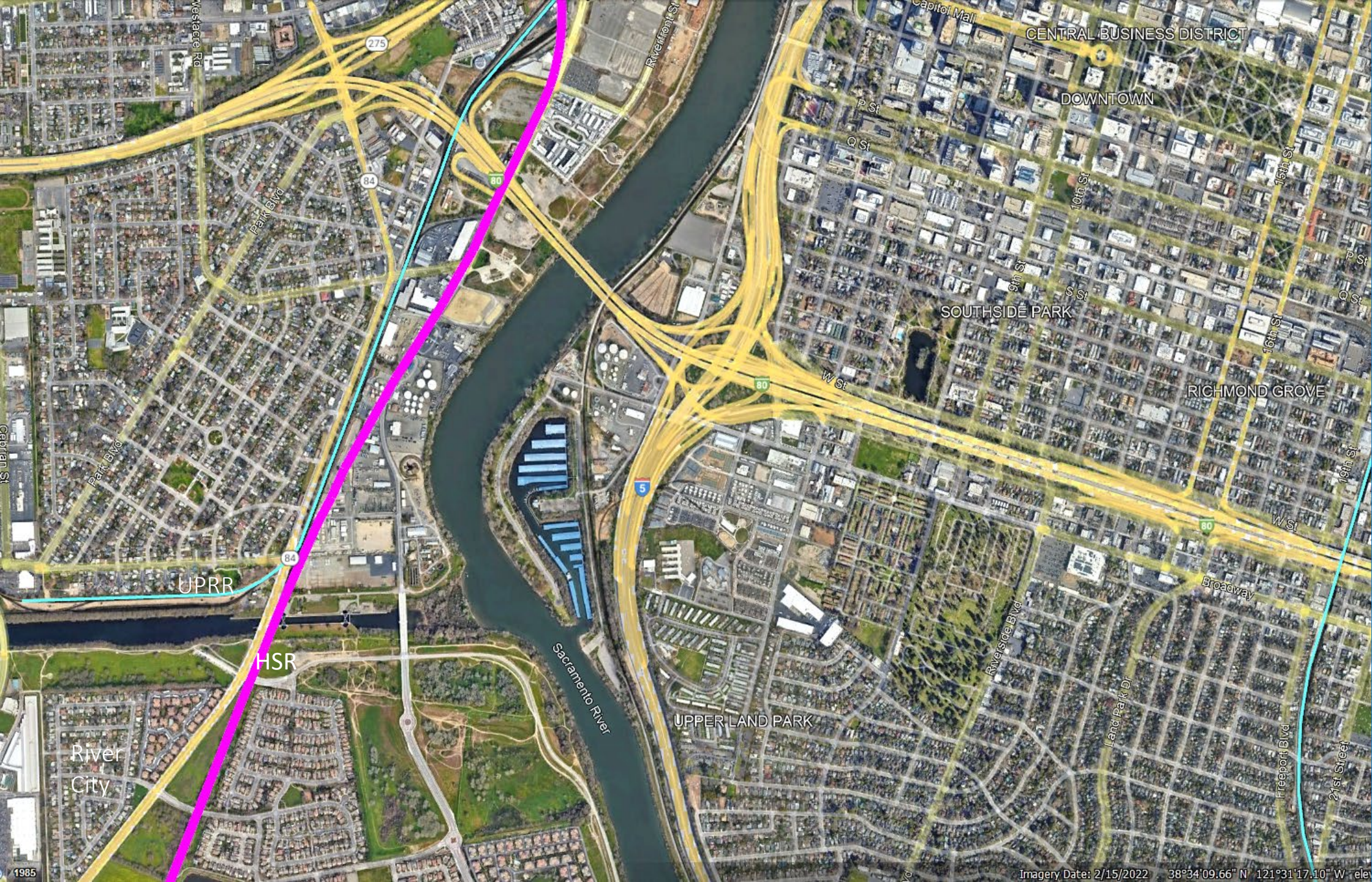


HSR between Redwood City, CA, and Lathrop



HSR between Sacramento HSR Station and Hwy 50

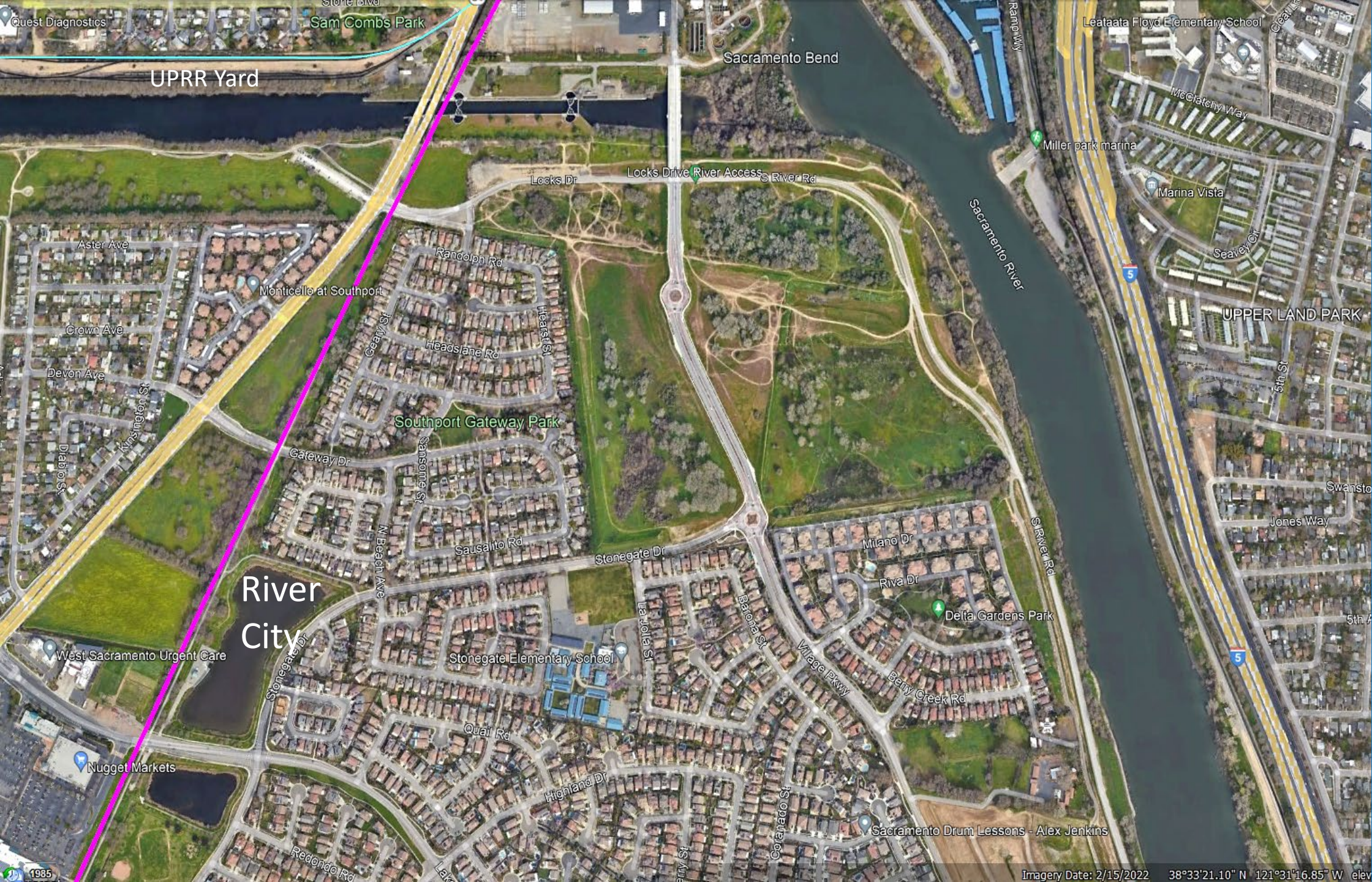
The HSR will leave the Sacramento Station on ground level, then pass over a new bridge parallel to the UPRR corridor bridge. The HSR begins to climb on the east bank of the Sacramento River, overpassing 3rd St. 3rd St has an 18 ft height restriction.



HSR between
Hwy 50 and
River City

The HSR will be
above the UPRR
tracks and
Hwy 50.

The new HSR
will use the
former
Sacramento
Northern
railroad corridor.



HSR at River City

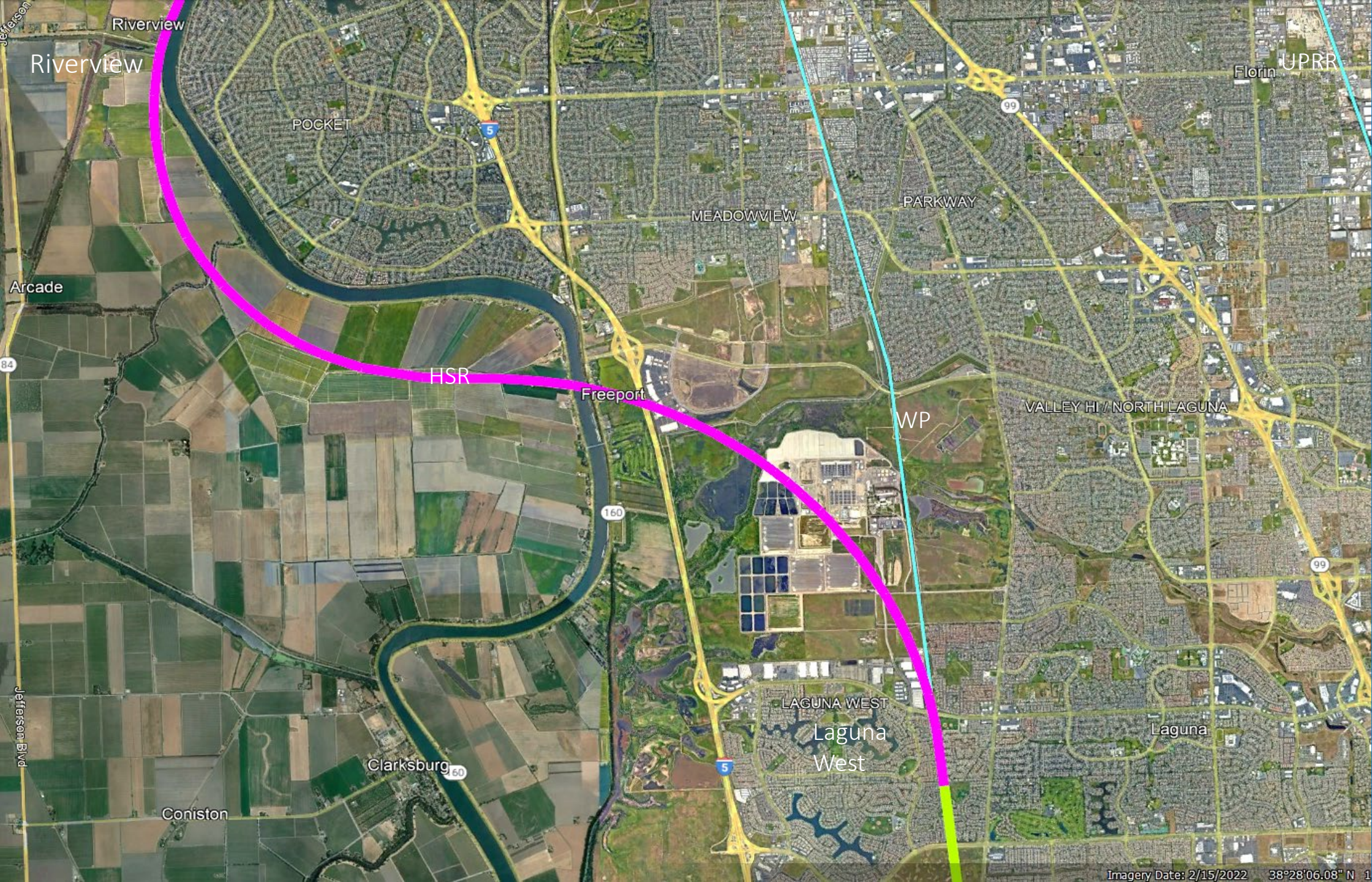
The HSR will now use the abandoned Sacramento Northern Railroad corridor.



HSR between River City and Riverview

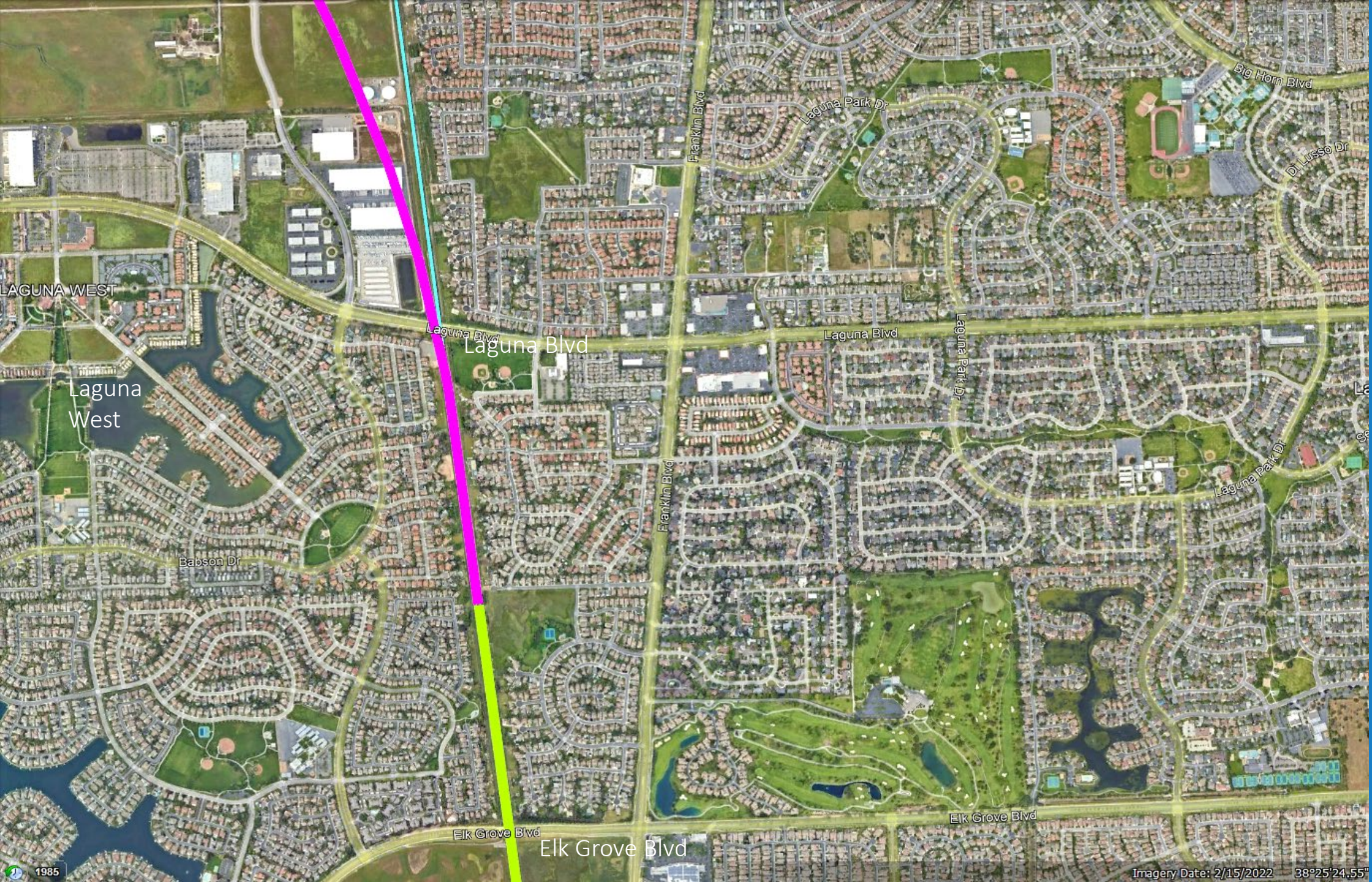
The HSR follows the Sacramento Northern RR Corridor.

The HSR is on the flyover to avoid conflict with on-ground roads and housing



HSR between Riverview and Laguna West

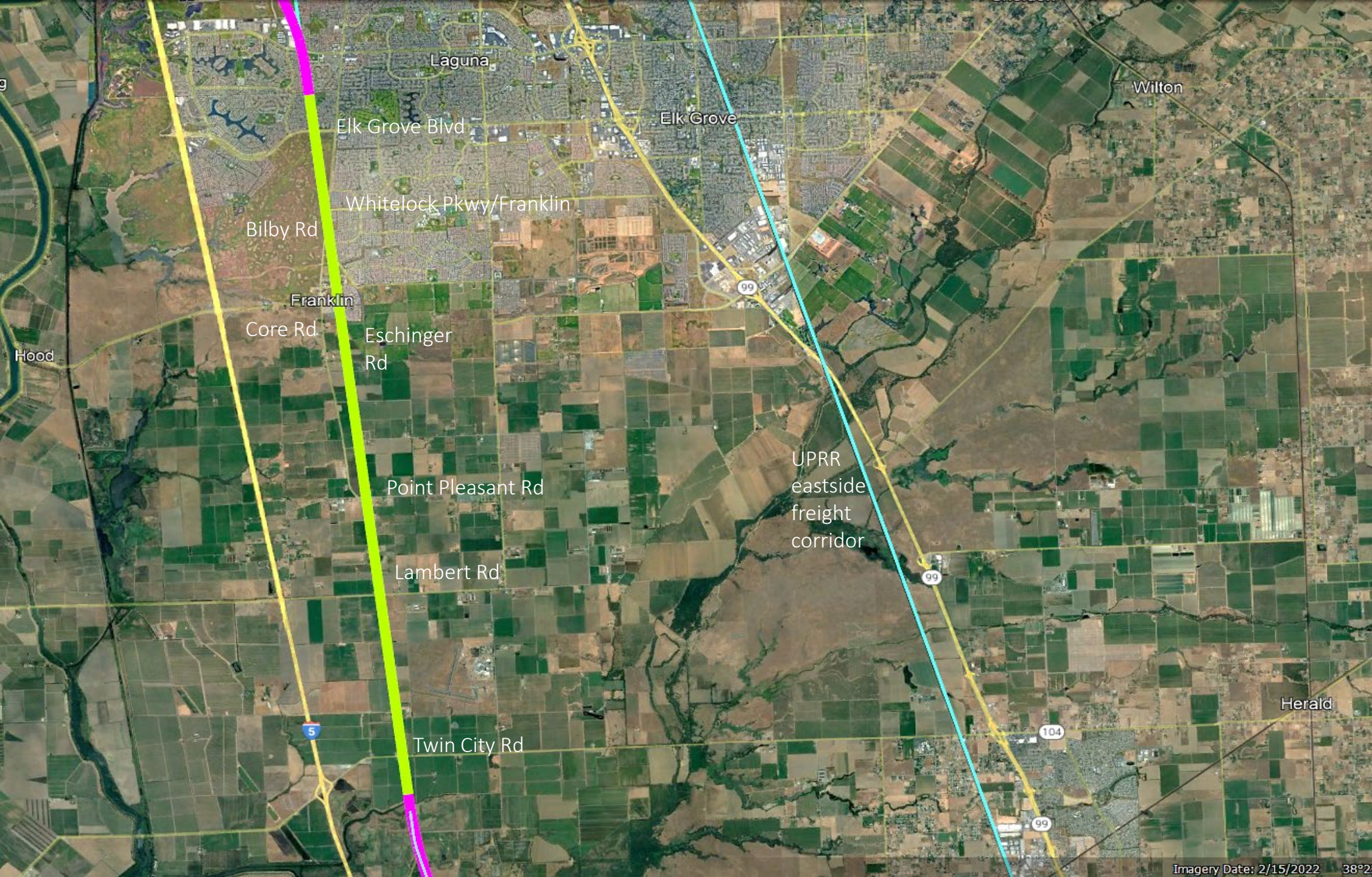
The HSR will depart the former Sacramento Northern RR right-of-way, cross the Sacramento River and intersect with the former Western Pacific RR (WP), now UPRR.



HSR at Laguna West

The HSR will fly over Laguna Blvd and go under the existing Elk Grove Blvd.

The HSR will now use the former WP corridor.



HSR between Elk Grove Blvd and Twin Cities Rd

New roadway overpasses will be at Whitelock Pkwy, Bilby Rd, two farm roads, Core Rd, Eschinger Rd, Point Pleasant Rd, Hein Rd to J8, Lambert Rd, Mokelumne School Rd, and Twin Cities Rd.

Not all grade crossings are indicated on the map.



Two HSR tracks on the west side, and one freight track on the east side

Franklin Blvd overpass with horseshoe loop
WPRR corridor width 100'
Raise power line masts where needed

Ramp grades, NW, SW, SE 4.6% and NE 5.6% may shift overpass 100' more to the south

Franklin Blvd North/South traffic

Franklin Whitelock Parkway Overpass

All overpass ramps rise to cross the rail track overpass.

The freight track on the east side may be eliminated.



Point Pleasant Road Overpass Modification

The Hwy J8 is moved to the west to allow acceptable roadway grades.

Relay this section of Hwy J 8

Point Pleasant Rd overpass, grade 0.54%

Provide new access roads to the overpass

Fill to E 19'

Two HSR tracks in the RoW of WPRR tracks

Revert to farmland

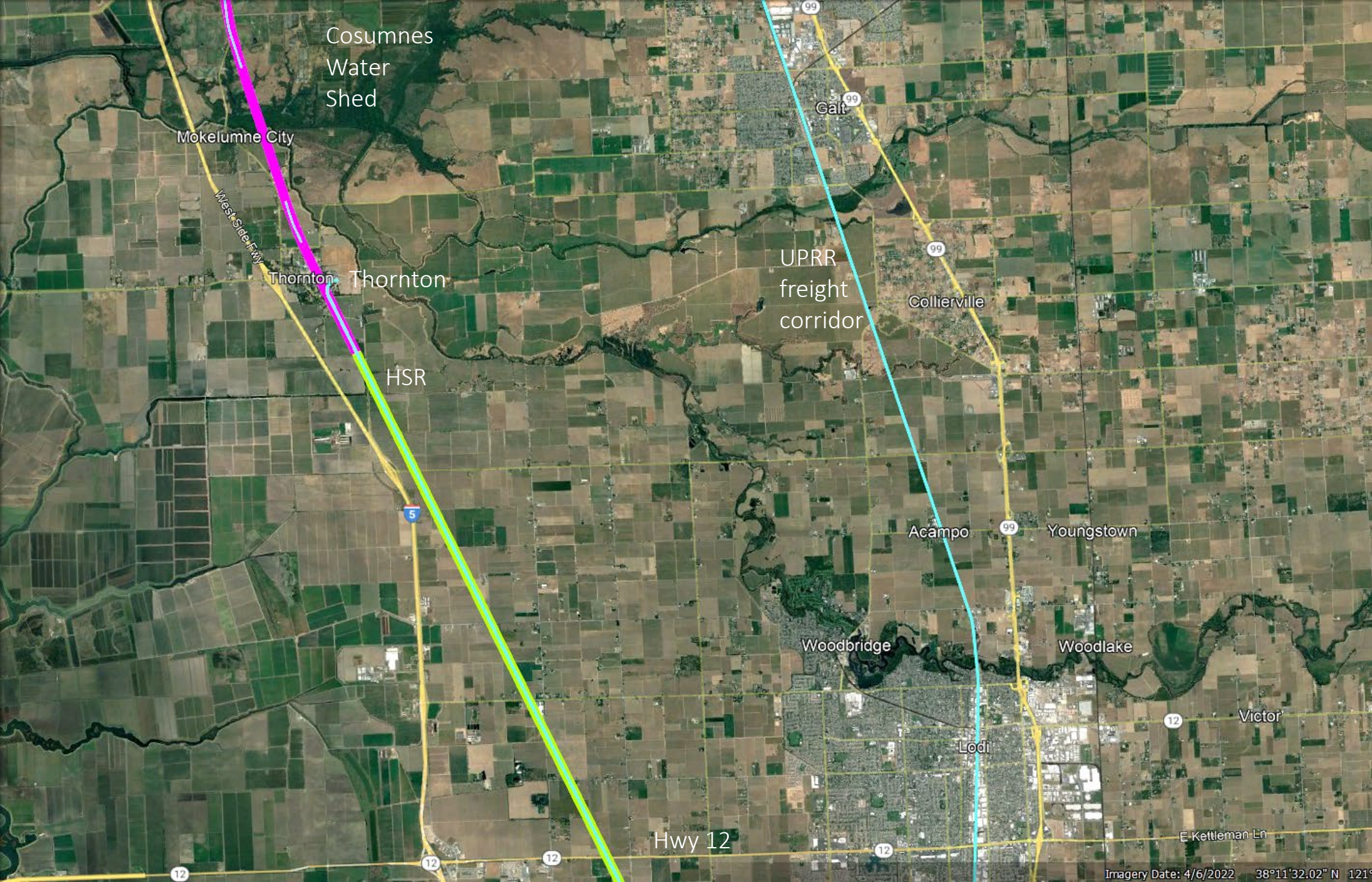
New HSR track

Two existing WPRR tracks to HSR

Sacramento_22e

© 2018 Google

Google Earth



HSR between South of Twin Cities Rd and Hwy 12

The HSR will fly over the Cosumnes River Watershed.

Thornton has the option to fly over or to go on-ground; there is an active freight rail spur to the lumber mill.

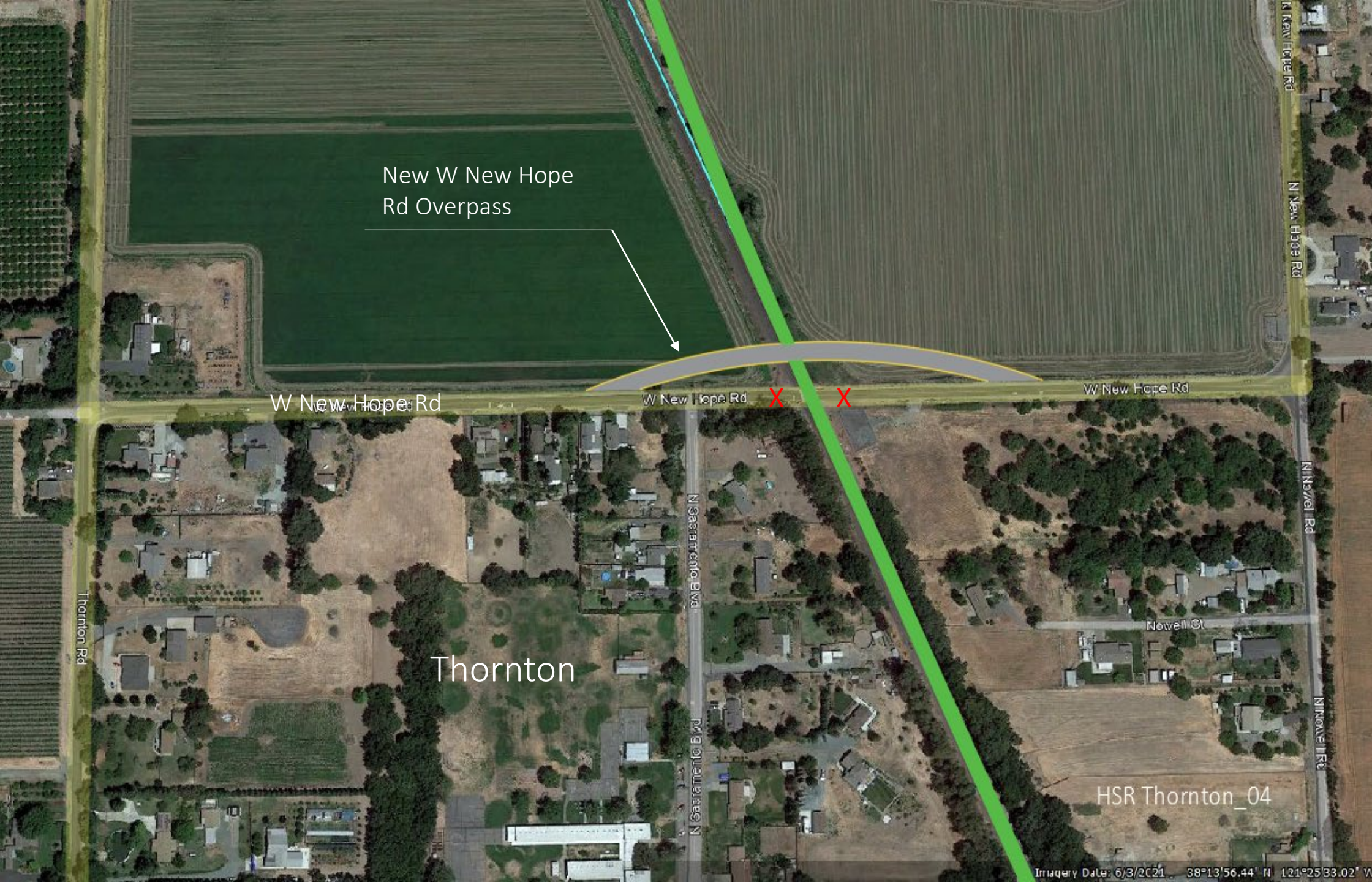
Thornton Rd, W Peltier Rd, Acampo Rd, Woodbridge Rd, Farm Road, W Turner, and W Sargent Rd will get roadway overpasses.



HSR Flyover
at Thornton
Option Two

Thornton

HSR Thornton_02



New W New Hope Rd Overpass

W New Hope Rd

W New Hope Rd

W New Hope Rd

Thornton

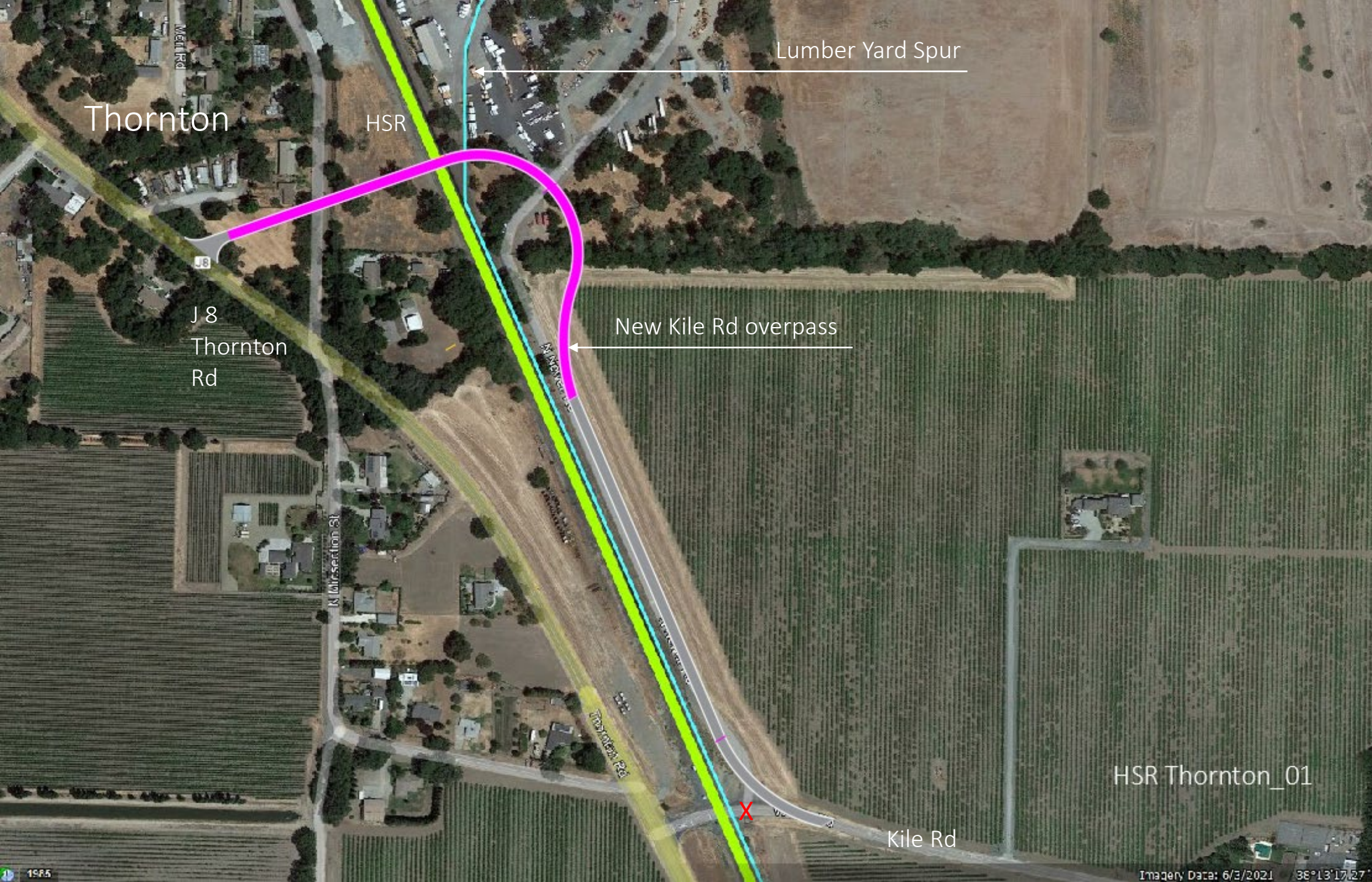
HSR Thornton_04

Irrigation Date: 6/3/2021 38°13'56.44' N 121°25'33.02' W

HSR On Ground at Thornton Option One

Option one with new W New Hope Rd overpass

The X section will be closed.



Thornton

HSR

Lumber Yard Spur

J 8

Thornton Rd

New Kile Rd overpass

HSR Thornton_01

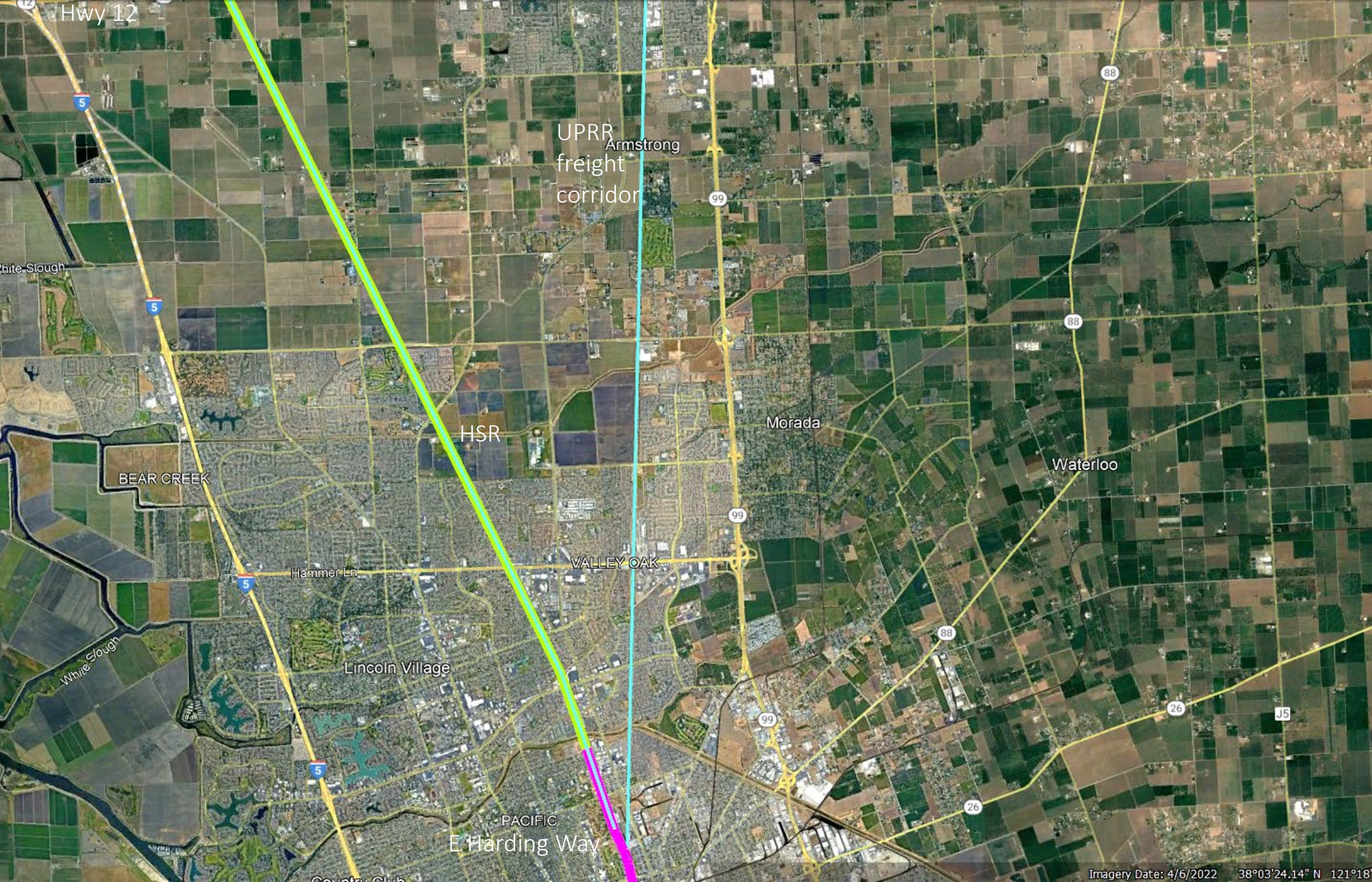
Kile Rd

HSR at Thornton Option One

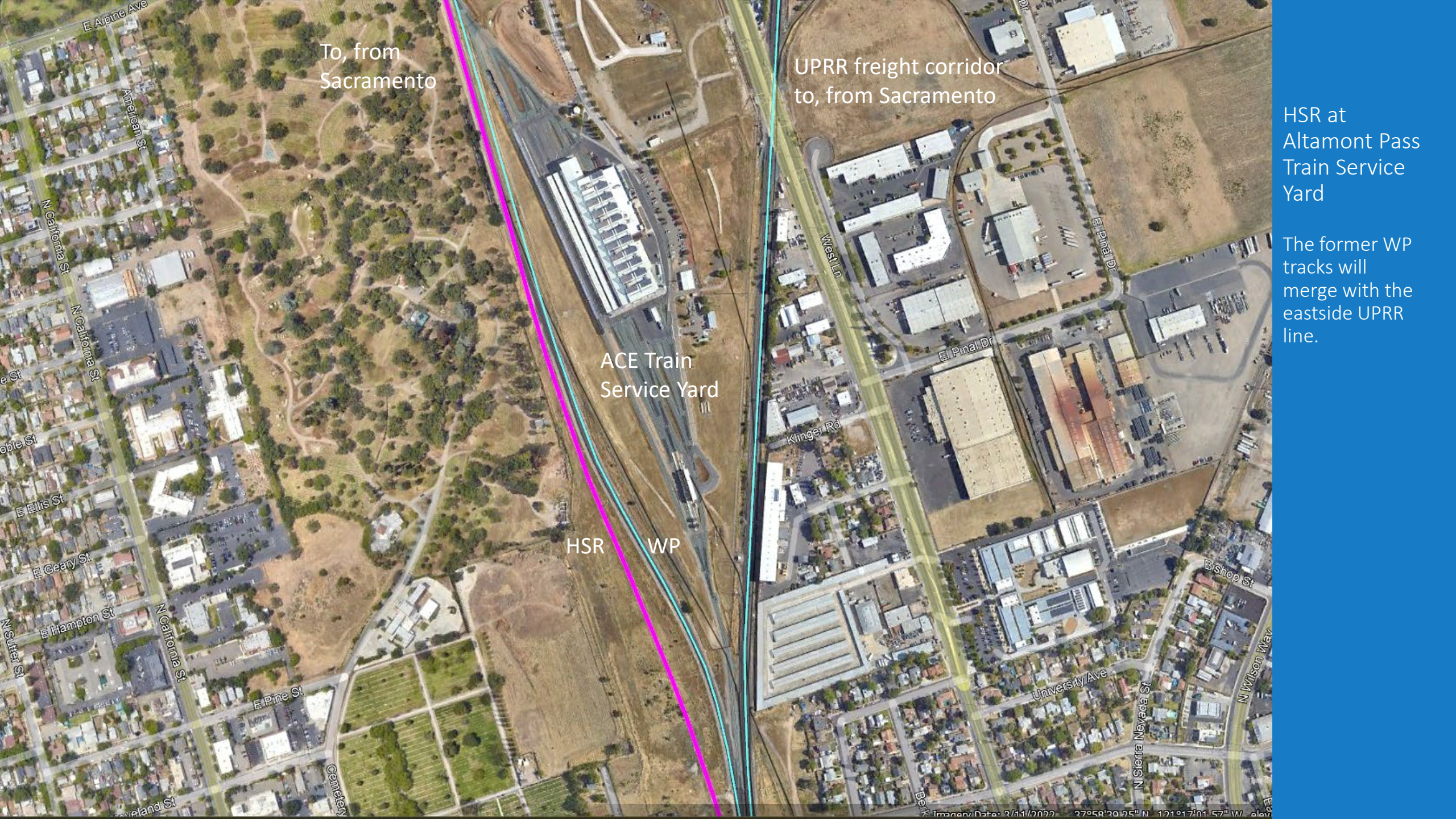
The HSR is on the ground.

Make an agreement with the UPRR so they can use the seldom-used spur line along the HSR corridor to serve the lumber yard.

The existing Kile Rd grade crossing will be closed "X"



HSR between
Hwy i2 and
E Harding Way



To, from
Sacramento

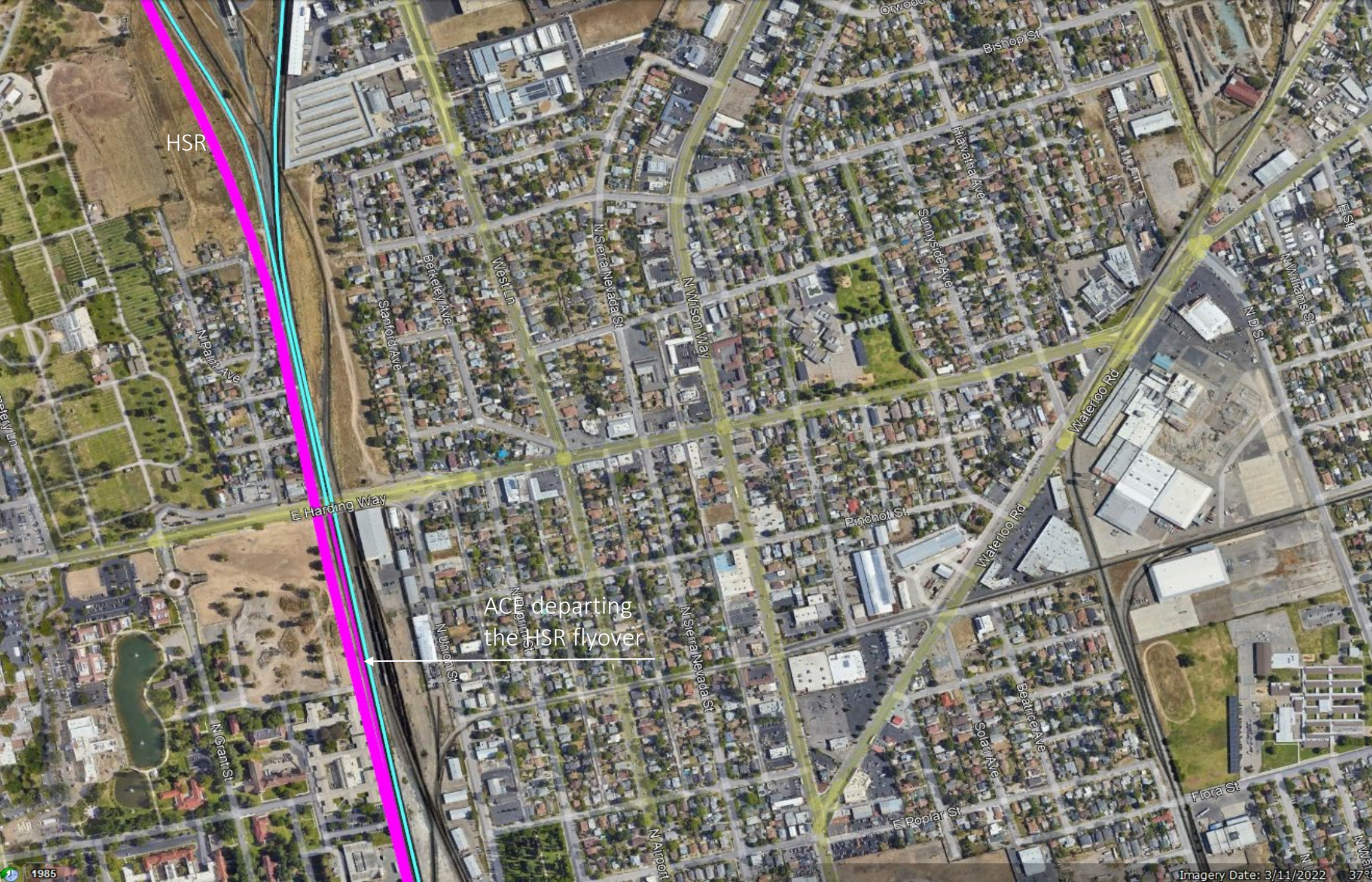
UPRR freight corridor
to, from Sacramento

ACE Train
Service Yard

HSR WP

HSR at
Altamont Pass
Train Service
Yard

The former WP
tracks will
merge with the
eastside UPRR
line.

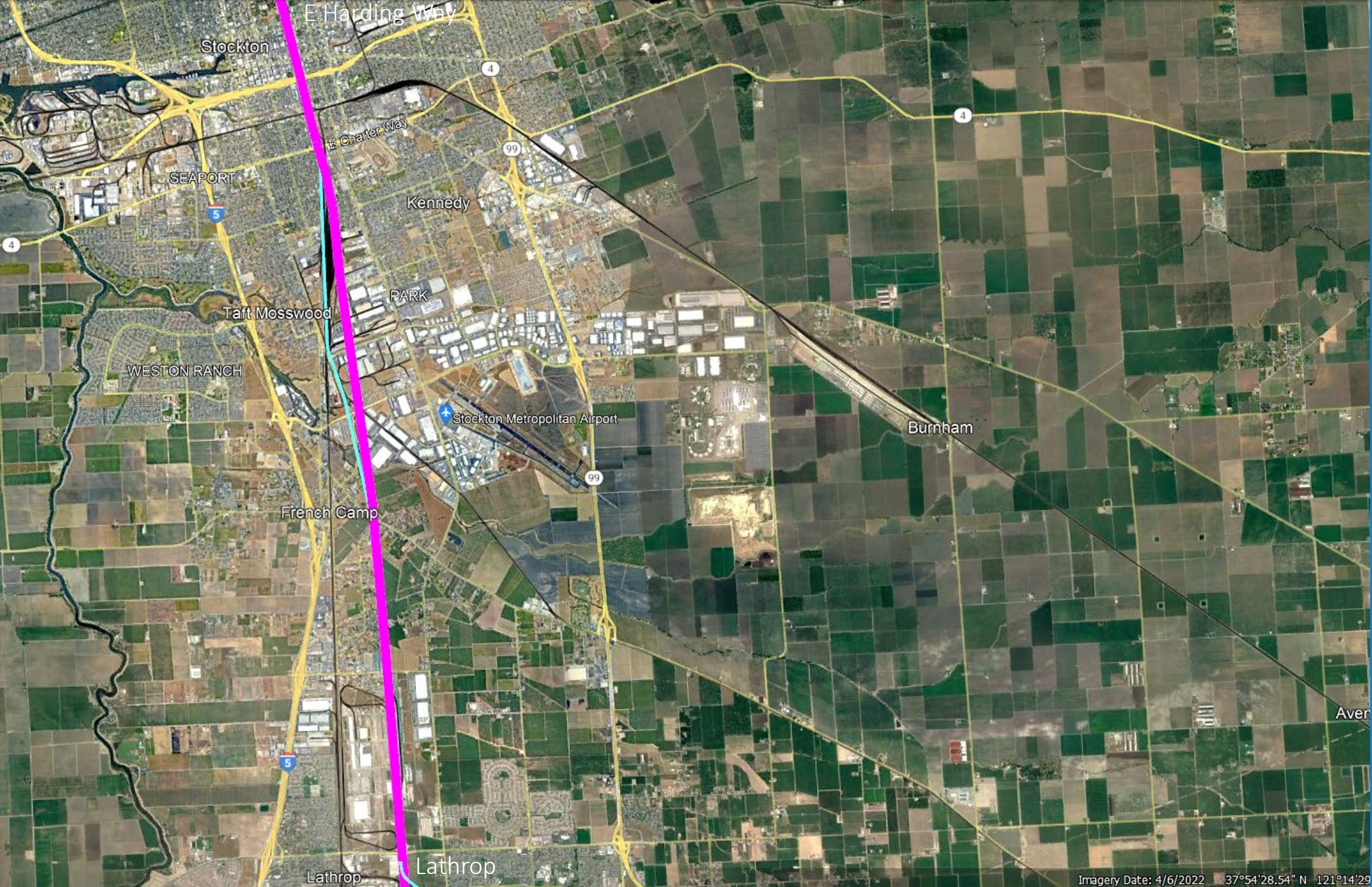


HSR

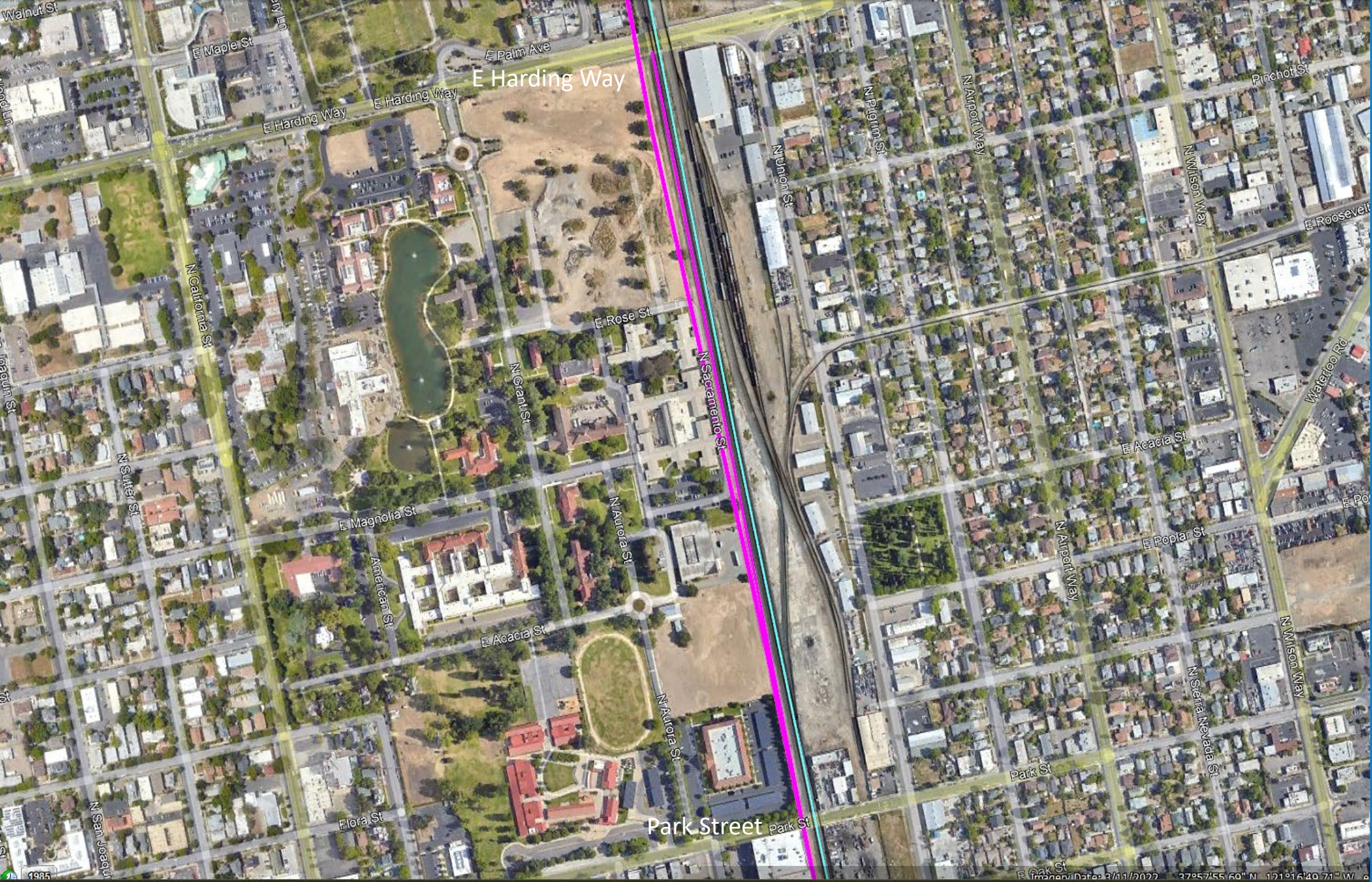
ACE departing the HSR flyover

HSR at Altamont Pass Train Service Yard

The ACE will depart the HSR flyover and will merge the on-ground former WP tracks which will connect to the ACE service yard.

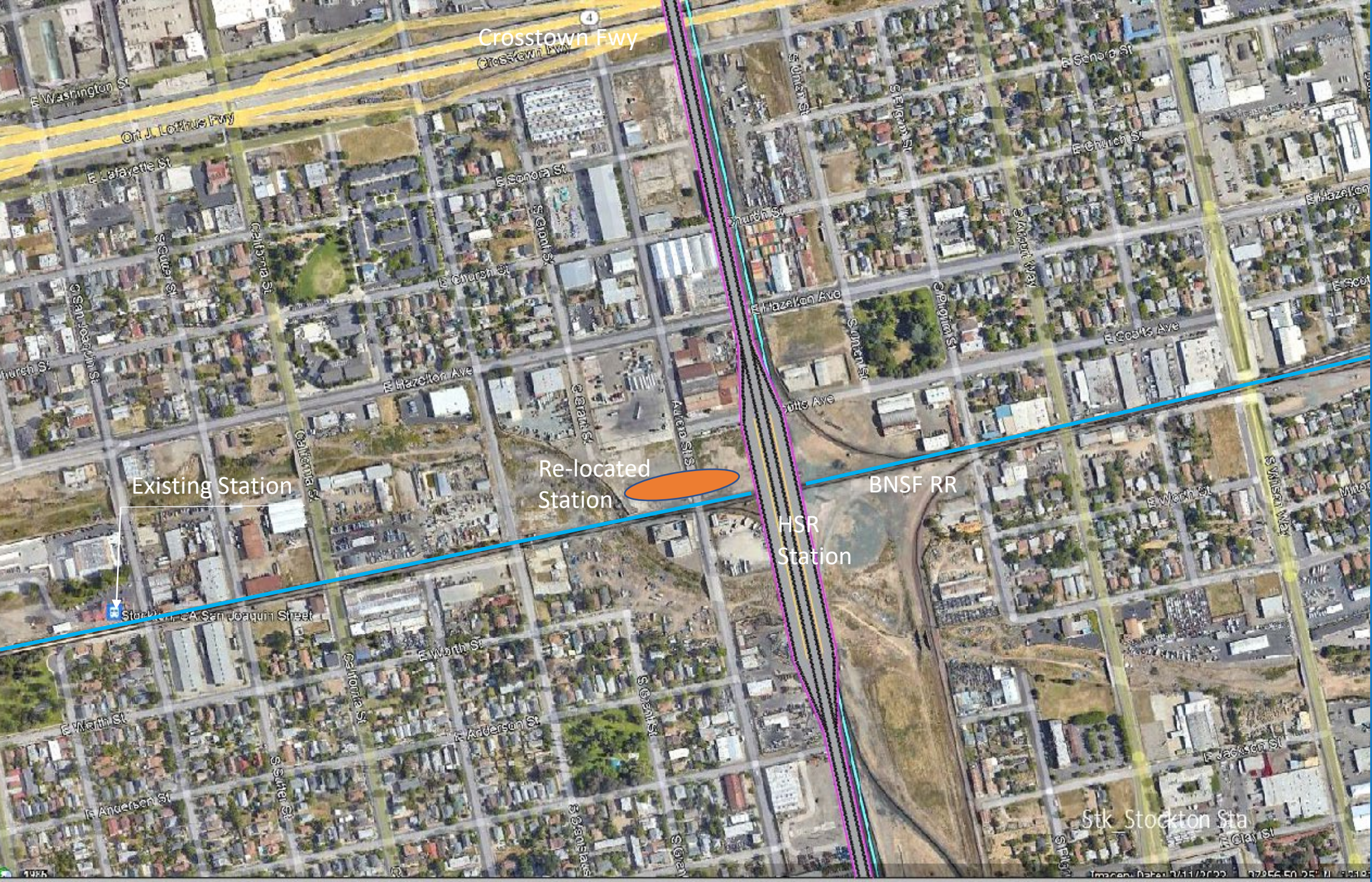


HSR between
E Harding Way
and Lathrop



HSR between E Harding Way and Park Street

Here the ACE line will leave the HSR double-track flyover in a single track to go to the ground level and then intersect with the WP tracks to reach the ACE service yard.

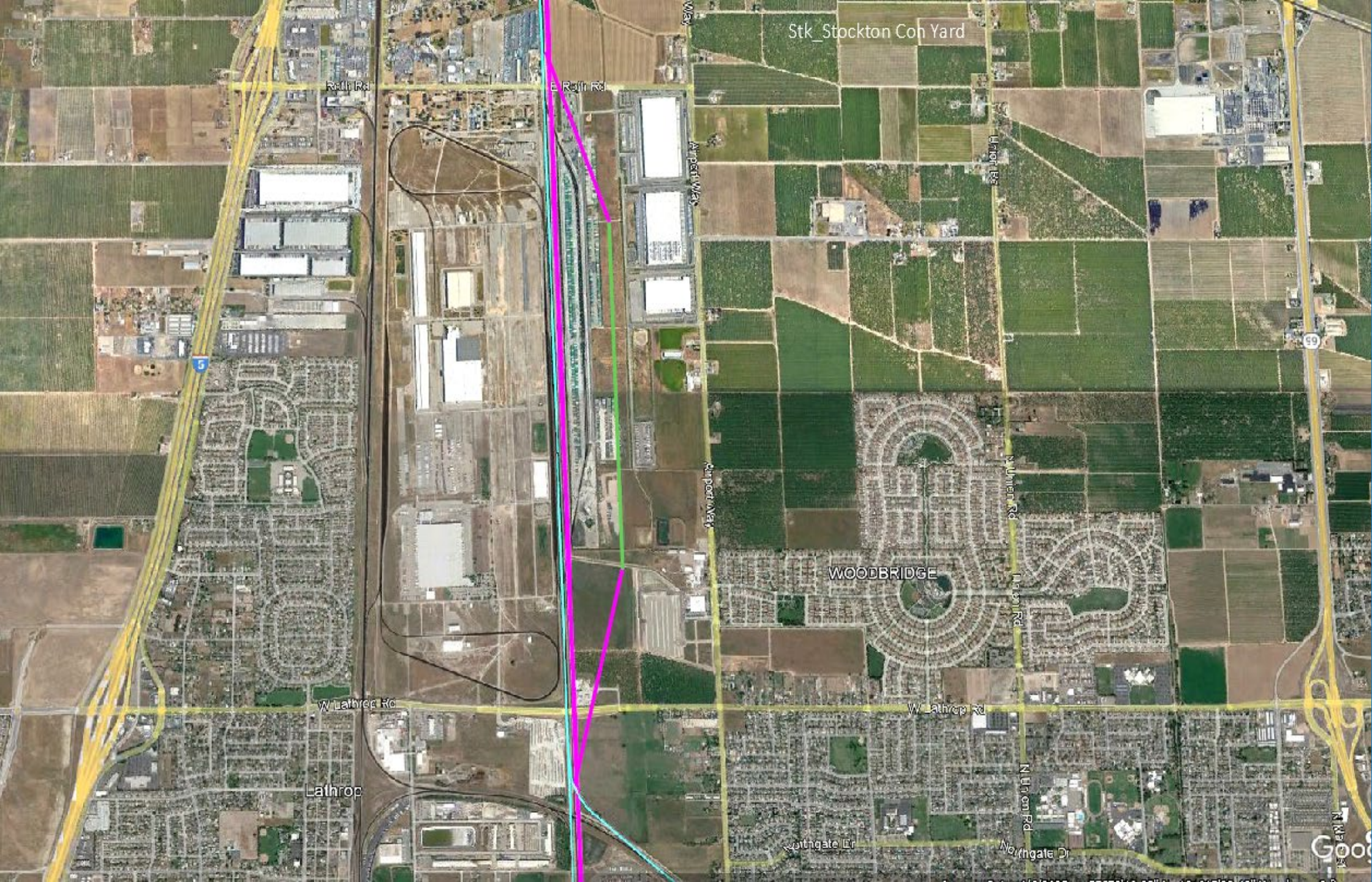


HSR 0.38 Miles South of Crosstown Fwy

The HSR will cross over the BNSF RR tracks at 0.38 miles south of Crosstown Fwy.

Move the existing Stockton, CA, San Joaquin Street Station to the east below the new HSR station for seamless connections.

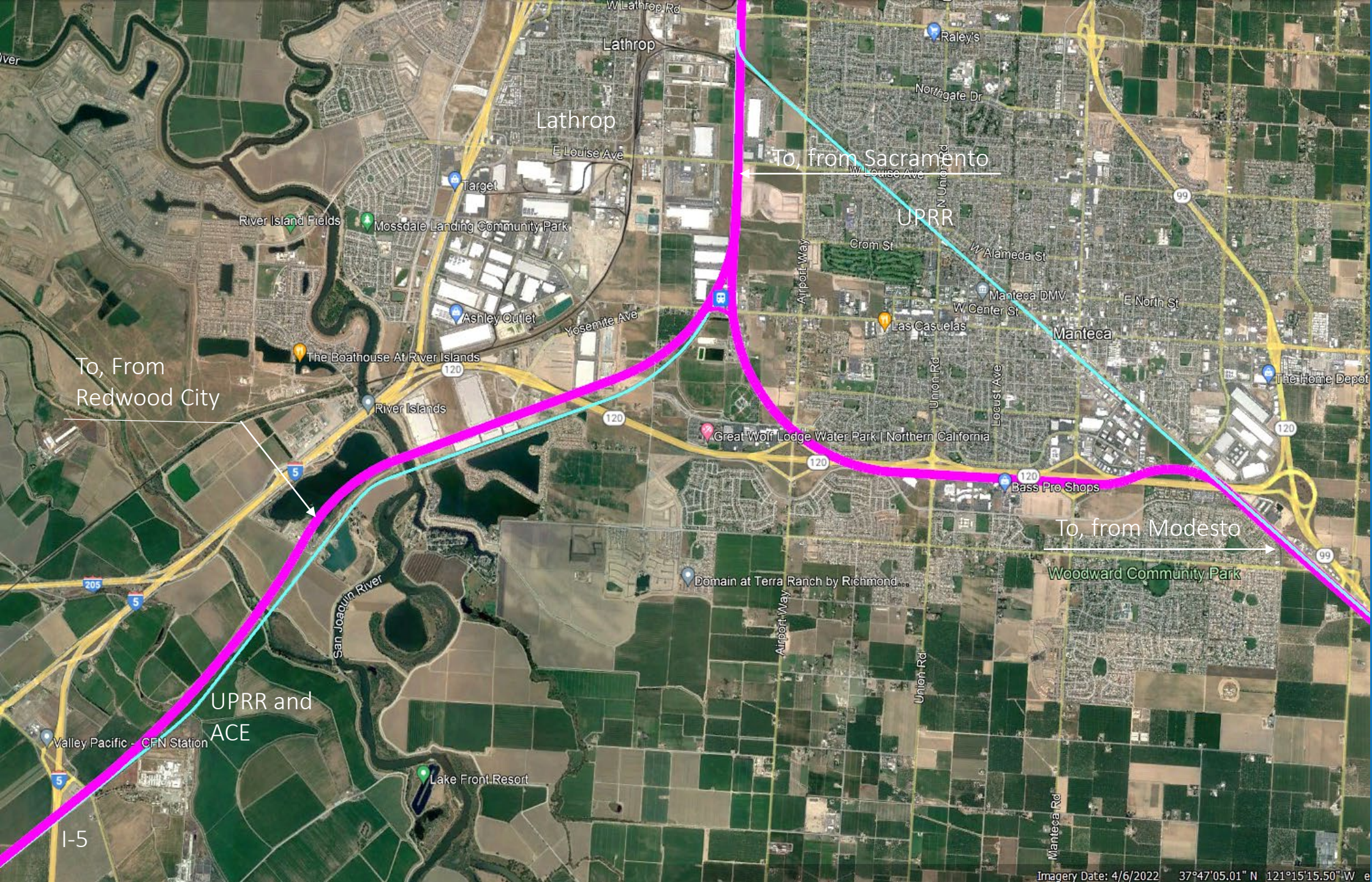
Stk Stockton Sta



HSR along the UPRR Intermodal Container Yard

Here the HSR may go on the ground and have access to the container yard to load/unload express freight.

Such HSR express freight can transport perishable goods, UPS, FedEx, and possibly Mail all along the proposed West Coast Corridor.



Altamont Pass
HSR between
I-5 and
Lathrop

The Lathrop Wey
will allow
passenger
transfer for the
three corridors.
Redwood City,
Lathrop
Sacramento.

Redwood City,
Lathrop,
Modesto.

Modesto,
Lathrop,
Sacramento.



HSR to Sacramento



HSR to Fremont, Redwood City, San Francisco, and San Jose



Park and Ride

HSR to Modesto, Bakersfield, Los Angeles



The Lathrop Wey for the HSR Train Corridors with the Connecting Station Platforms

Yosemite Ave connects to Hwy 120, 99, and I-5.

Connections to the platforms are below the covered flyover tracks.

This station will be secure and enclosed.